

# BEANO THREE ARRIVAL (RNAV)

SE-3, 27 NOV 2025 to 25 DEC 2025

## ARRIVAL ROUTE DESCRIPTION

ELMUC TRANSITION (ELMUC.BEANO3):

HARDE TRANSITION (HARDE.BEANO3):

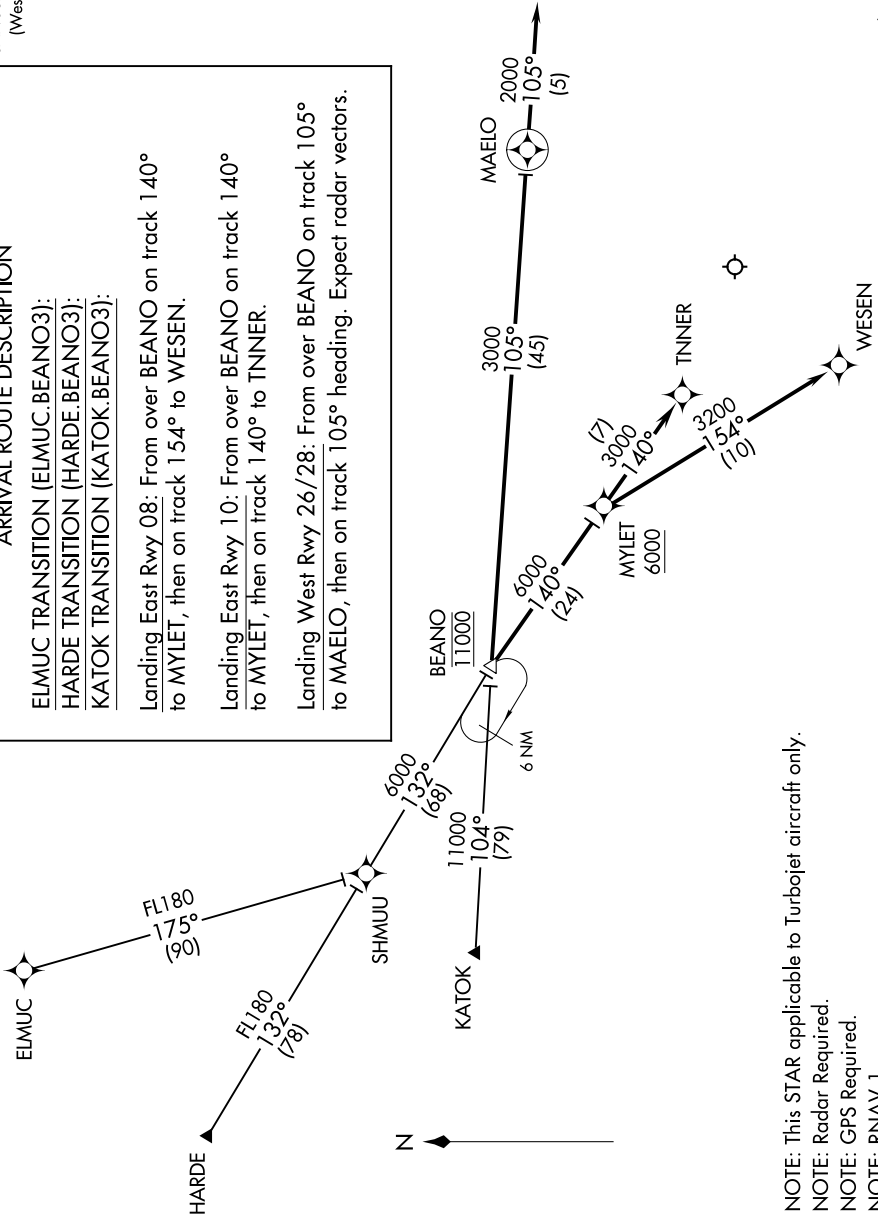
KATOK TRANSITION (KATOK.BEANO3):

Landing East Rwy 08: From over BEANO on track 140° to MYLET, then on track 154° to WESEN.

Landing East Rwy 10: From over BEANO on track 140° to MYLET, then on track 140° to TNNER.

Landing West Rwy 26/28: From over BEANO on track 105° to MAELO, then on track 105° heading. Expect radar vectors.

SAN JUAN APP CON  
(West & Southwest)  
119.4 269.2  
(North & East)  
120.9 290.2  
D-ATIS  
125.8



NOTE: Chart not to scale.

NOTE: This STAR applicable to Turbojet aircraft only.  
 NOTE: Radar Required.  
 NOTE: GPS Required.  
 NOTE: RNAV 1.

SE-3, 27 NOV 2025 to 25 DEC 2025

# BEANO THREE ARRIVAL (RNAV)