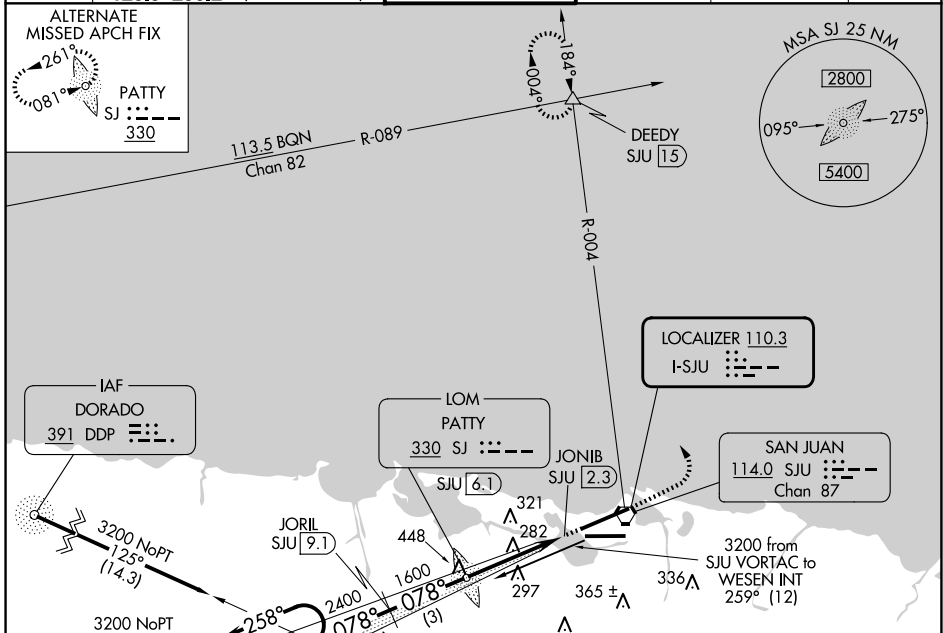


LOC I-SJU 110.3	APP CRS 078°	Rwy Ldg 9384
		TDZE 9
		Apt Elev 10

ILS or LOC RWY 8

LUIS MUNOZ MARIN INTL (SJU)(TJSJ)

DME required.		MALSR 	MISSED APPROACH: Climb to 2000 then climbing left turn to 3000 on heading 320° and SJU VORTAC R-004 to DEEDY Int/SJU 1.5 DME and hold.		
▼ For inop ALS, increase S-ILS 8 all Cats visibility to 1 SM.					
D-ATIS 125.8	SAN JUAN APP CON 119.4 269.2 (WEST & SW) 120.9 290.2 (NORTH & EAST)		SAN JUAN TOWER 132.05 257.8	GND CON 121.9 348.6	CLNC DEL 126.4 284.6
				CPDLC	



One Minute Holding Pattern	WESEN INT SJU [12]	JORIL SJU [9.1]	PATTY LOM	ILS unusable 0.8 NM from threshold inbound.
3200 ← 258°	← 078°	← 078°	← 078°	
GS 3.00° TCH 46	2400	1600	1541	
VGSi and ILS glidepath not coincident (VGSi Angle 3.00/TCH 70).				
	2.9 NM	3 NM	3.8 NM	0.8
CATEGORY	A	B	C	D
S- ILS-8	311-½		302 (400-½)	
S- LOC-8	560-½	551 (600-½)	560-1 551 (600-1)	560-1½ 551 (600-1¼)
CIRCLING	600-1	590 (600-1)	740-2 730 (800-2)	920-3 910 (1000-3)

ELEV 10	D	TDZE 9			
REIL Rwy 26					
HIRL Rwys 8-26 and 10-28					
FAF to MAP 3.8 NM					
Knots	60	90	120	150	180
Min:Sec	3:48	2:32	1:54	1:31	1:16

SE-3, 27 NOV 2025 to 25 DEC 2025

SE-3, 27 NOV 2025 to 25 DEC 2025