

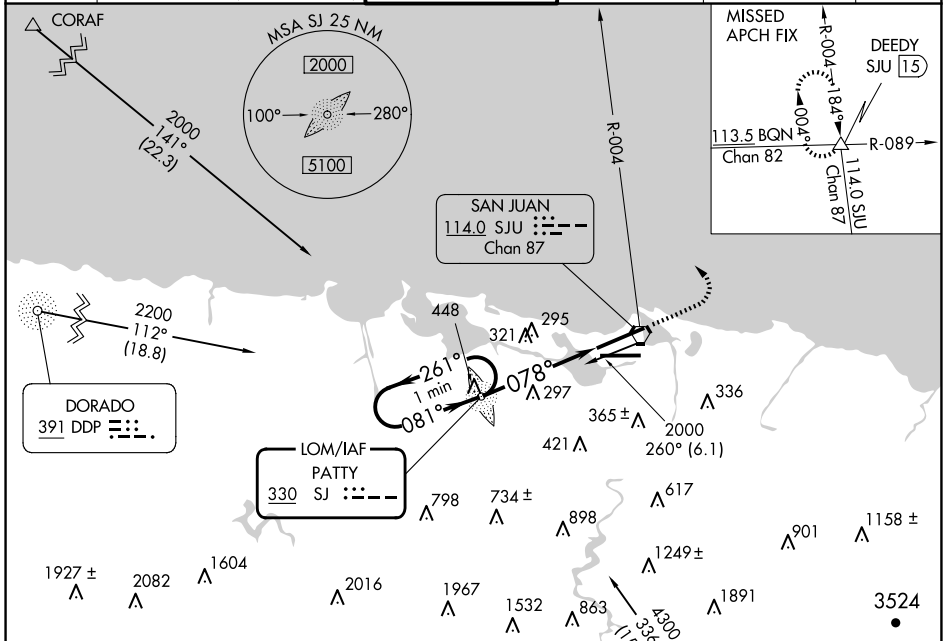
LOM SJ	APP CRS	Rwy Ldg	<b>9384</b>
<b>330</b>	<b>078°</b>	TDZE	<b>9</b>
		Apt Elev	<b>10</b>

# NDB RWY 8

LUIS MUNOZ MARIN INTL (SJU)(TJSJ)

<b>MALS R</b>	MISSED APPROACH: Climb to 2000, then climbing left turn to 3000 via SJU VORTAC R-004 to DEEDY Int/SJU 15 DME and hold.
---------------	--

D-ATIS	SAN JUAN APP CON	SAN JUAN TOWER	GND CON	CLNC DEL	CPDLC
<b>125.8</b>	<b>119.4 269.2</b> (WEST & SW) <b>120.9 290.2</b> (NORTH & EAST)	<b>132.05 257.8</b>	<b>121.9 348.6</b>	<b>126.4 284.6</b>	



ELEV 10	<b>D</b>	TDZE 9
---------	----------	--------

REIL Rwy 26  
HIRL Rlys 8-26 and 10-28  
FAF to MAP 4.6 NM

Knots	60	90	120	150	180
Min:Sec	4:36	3:04	2:18	1:50	1:32

One Minute Holding Pattern 2000 ← 261° 081° → 1700 078°	PATTY LOM 2000 3000 SJU R-004 DEEDY			
VGSI and descent angles not coincident (VGSI Angle 3.00/TCH 70). 3.36° TCH 46 4.6 NM				
CATEGORY S-8 CIRCLING	A 600-¾ 590 (600-1)	B 591 (600-¾)	C 600-1 591 (600-1) 740-2 730 (800-2)	D 600-1½ 591 (600-1½) 920-3 910 (1000-3)

SE-3, 27 NOV 2025 to 25 DEC 2025

SE-3, 27 NOV 2025 to 25 DEC 2025