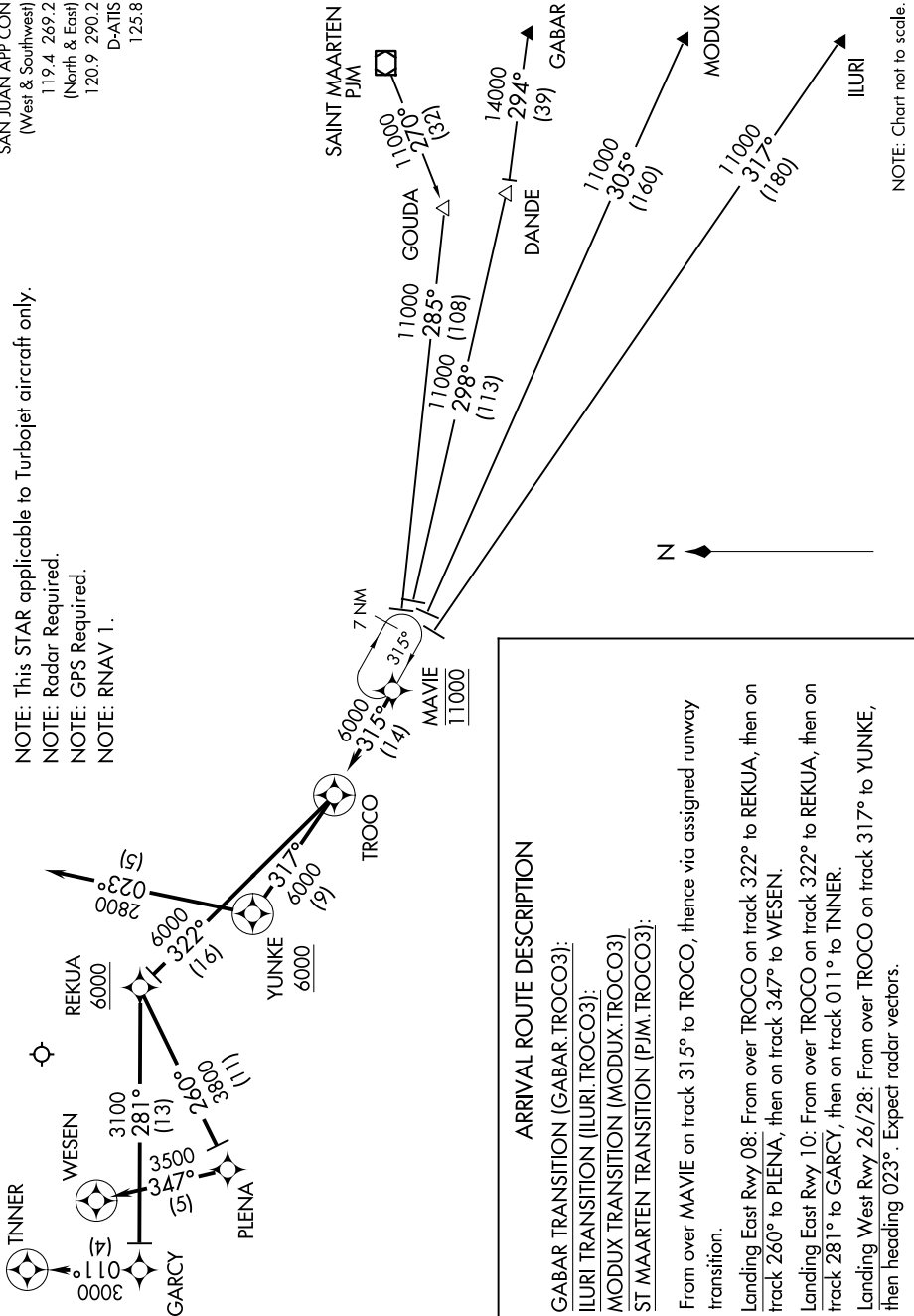


TROCO THREE ARRIVAL (RNAV)

SE-3, 27 NOV 2025 to 25 DEC 2025

SAN JUAN APP CON
(West & Southwest)
119.4 269.2
(North & East)
120.9 290.2
D-ATIS
125.8

NOTE: This STAR applicable to Turbojet aircraft only.
NOTE: Radar Required.
NOTE: GPS Required.
NOTE: RNAV 1.



NOTE: Chart not to scale.

ARRIVAL ROUTE DESCRIPTION

- GABAR TRANSITION (GABAR.TROCO3):
- ILURI TRANSITION (ILURI.TROCO3):
- MODUX TRANSITION (MODUX.TROCO3)
- ST MAARTEN TRANSITION (PJM.TROCO3):

From over MAVIE on track 315° to TROCO, thence via assigned runway transition.

Landing East Rwy 08: From over TROCO on track 322° to REKUA, then on track 260° to PLENA, then on track 347° to WESEN.

Landing East Rwy 10: From over TROCO on track 322° to REKUA, then on track 281° to GARCIA, then on track 011° to TINNER.

Landing West Rwy 26/28: From over TROCO on track 317° to YUNKE, then heading 023°. Expect radar vectors.

SE-3, 27 NOV 2025 to 25 DEC 2025