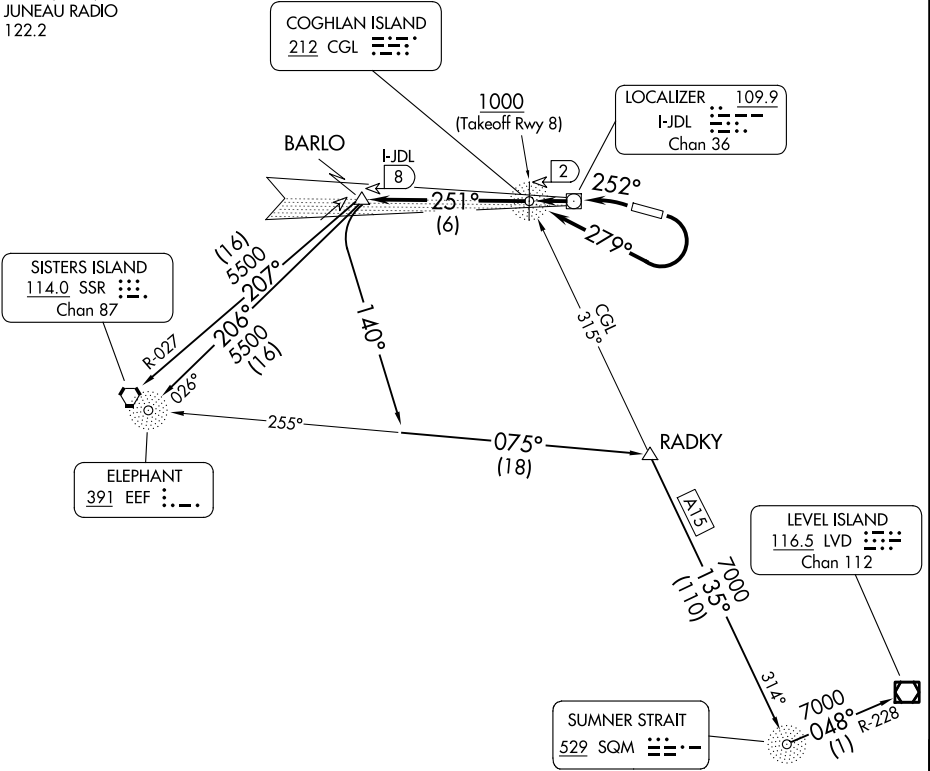


ANCHORAGE CENTER  
133.9  
ATIS  
135.2  
GND CON  
121.9  
JUNEAU TOWER ★  
118.7 (CTAF) 278.3  
JUNEAU RADIO  
122.2



TAKEOFF MINIMUMS

Rwy 8: 1000-3 with minimum climb from 1000 as stated per transition.  
Rwy 26: 600-2 or standard with minimum climb of 595' per NM to 800, then as stated per transition.

NOTE: SISTERS ISLAND and ELEPHANT Transitions: Minimum climb of 330' per NM to 2800.  
NOTE: LEVEL ISLAND and SUMNER STRAIT Transitions: Minimum climb of 385' per NM to 4600'.  
NOTE: ADF required.  
NOTE: Obtain ATC approval for this procedure if not issued as part of the IFR clearance.  
CAUTION: Rapidly rising terrain to 3000' MSL north, south and east of airport.

NOTE: Chart not to scale.

(CONTINUED ON FOLLOWING PAGE)