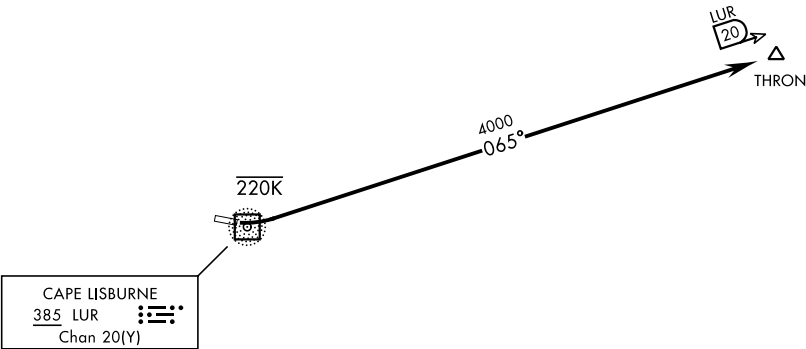


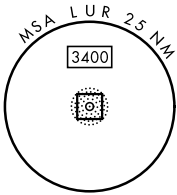
ANCHORAGE CENTER
119.65 363.25
KOTZEBUE RADIO ★
122.3
CTAF
126.2

MILITARY CERTIFIED
AIRCREWS OR AUTHORIZED
CONTRACT AIRCRAFT ONLY
NOT FOR CIVIL USE
NIGHT OPERATIONS NOT AUTHORIZED.



CAUTION: For Rwy 9, do not exceed 220 KIAS until intercepting LUR 065°
Procedure not authorized for CAT DE aircraft.
Uncontrolled airspace below 700' AGL within 7 NM of Cape Lisburne airport.
WARNING: High terrain within 2 NM of DER requiring prompt compliance with departure procedure instructions, do not delay start of initial turn.

2142



DEPARTURE ROUTE DESCRIPTION

TAKEOFF RWY 9: Turn left within ½ mile of departure end and intercept LUR 065° outbound to THRON. Maintain 4000 or ATC assigned altitude.

TAKEOFF RWY 27: Not authorized.

AK, 27 NOV 2025 to 22 JAN 2026

AK, 27 NOV 2025 to 22 JAN 2026