

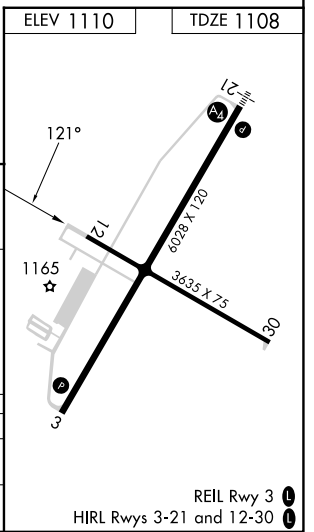
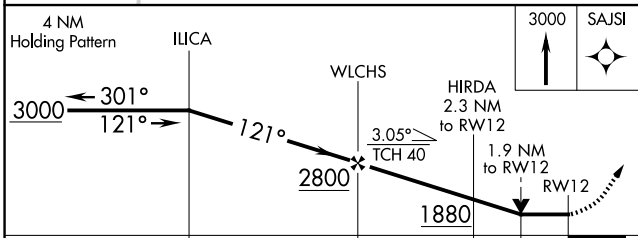
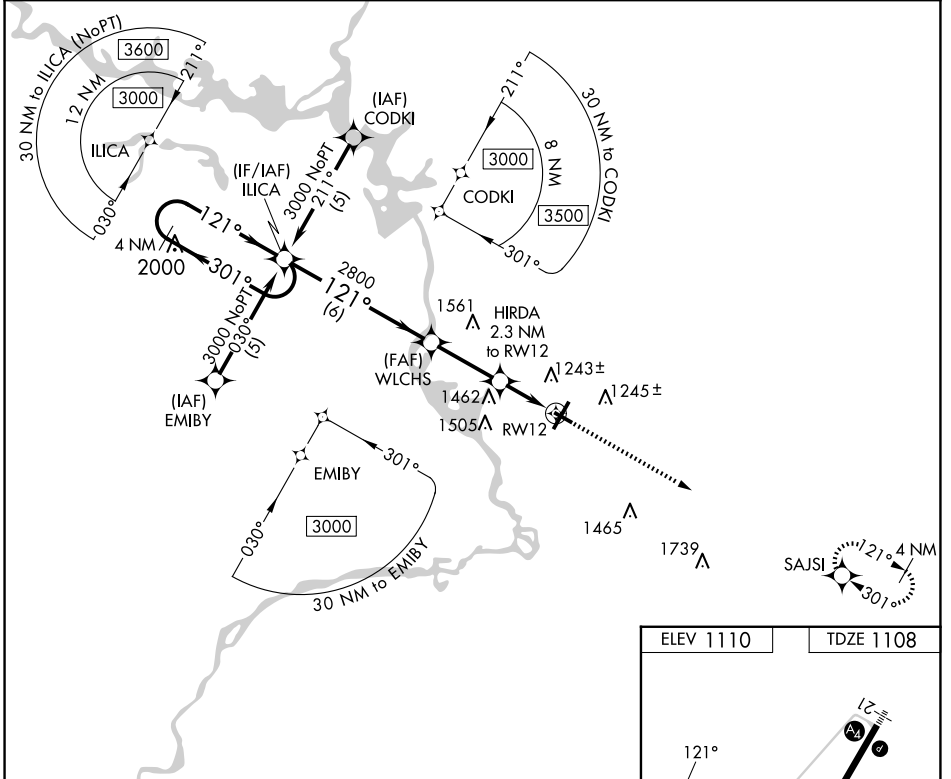
APP CRS	Rwy Idg	3635
121°	TDZE	1108
	Apt Elev	1110

RNAV (GPS) RWY 12

STEVENS POINT MUNI (STE)

RNP APCH - GPS.		MISSED APPROACH: Climb to 3000 direct SAJSI and hold.
<p>▼ Rwy 12 helicopter visibility reduction below $\frac{3}{4}$ SM NA. When local altimeter not received, use Mosinee altimeter setting and increase all MDA 60 feet, increase LNAV Cat C and D visibility $\frac{1}{8}$ SM. VDP NA when using Mosinee altimeter setting.</p>		

AWOS-3 119.275	MINNEAPOLIS CENTER 124.4 317.7	UNICOM 122.7 (CTAF) 0
--------------------------	------------------------------------------	---------------------------------



CATEGORY	A	B	C	D
LNAV MDA	1760-1	652 (700-1)	1760- $\frac{1}{8}$	652 (700- $\frac{1}{8}$)
C CIRCLING	1760-1	650 (700-1)	1860- $\frac{1}{4}$ 750 (800- $\frac{1}{4}$)	1860- $\frac{1}{2}$ 750 (800- $\frac{1}{2}$)

EC-3, 27 NOV 2025 to 25 DEC 2025

EC-3, 27 NOV 2025 to 25 DEC 2025