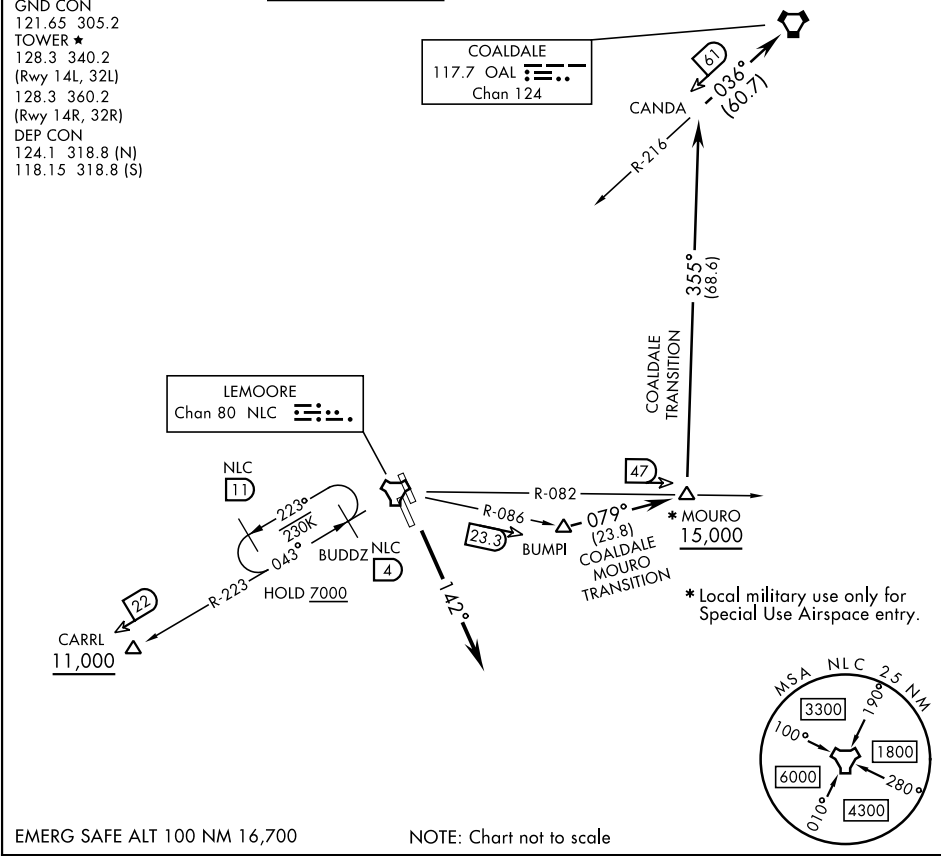


ATIS ★ 121.575 327.15  
CLNC DEL  
124.1 371.9  
GND CON  
121.65 305.2  
TOWER ★  
128.3 340.2  
(Rwy 14L, 32L)  
128.3 360.2  
(Rwy 14R, 32R)  
DEP CON  
124.1 318.8 (N)  
118.15 318.8 (S)

TOP ALTITUDE:  
Assigned by ATC

RADAR required



**DEPARTURE ROUTE DESCRIPTION**

**TAKEOFF RUNWAY 14L/14R:** Climb to 2000 via hdg 142° then radar vectors to join assigned transition or route.

**CARRL TRANSITION (REVES5.CARRL):** From CARRL thence as filed. Cross CARRL at or above 11,000.

**COALDALE TRANSITION (REVES5.OAL):** From BUMPI direct MOURO, direct CANDA, direct COALDALE VORTAC. Cross MOURO at or above 15,000.

**MOURO TRANSITION (REVES5.MOURO):** From BUMPI direct MOURO then as filed.

**LOST COMMUNICATIONS:** If no transmissions are received within 8 DME of NLC TACAN, fly departure heading to intercept NLC 10 DME arc, arc to respective departure radial then via departure radial to assigned departure fix. Then via assigned route. Once established on departure radial climb to filed altitude.