

VORTAC OSH <b>116.75</b> Chan <b>114 (Y)</b>	APP CRS <b>346°</b>	Rwy Idg TDZE <b>795</b> Apt Elev <b>808</b>
--	------------------------	---

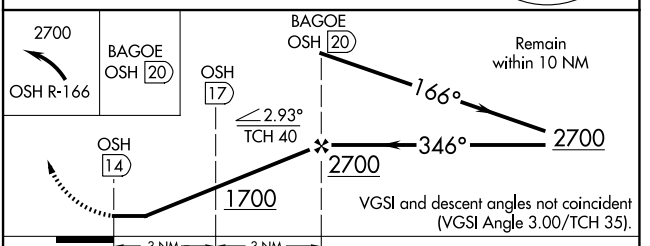
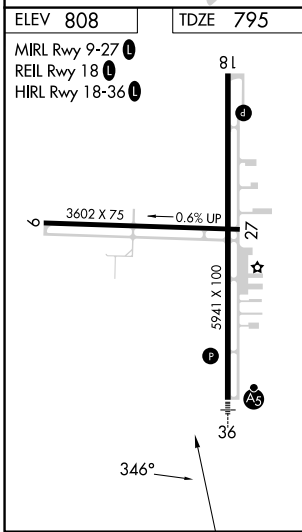
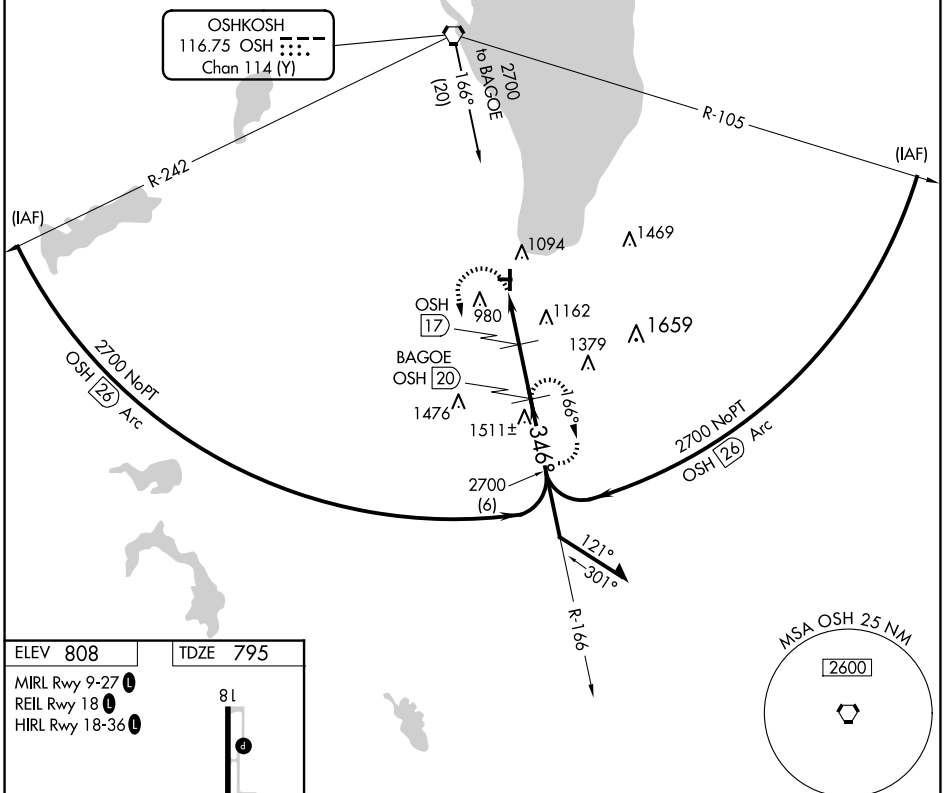
# VOR/DME RWY 36

FOND DU LAC COUNTY (F.L.D)

▼ Rwy 36 helicopter visibility reduction below 3/4 SM NA. Circling Rwy 9, 27 NA at night. For inop ALS when using Oshkosh altimeter setting, increase S-36 Cat A/B visibility to 1 SM, and Cat C/D to 1 1/2 SM. For inop ALS, increase S-36 Cat A/B visibility to 1 SM, Cat C/D to 1 1/2 SM. When local altimeter setting not received, use Oshkosh altimeter setting and increase all MDAs 40 feet and visibility S-36 Cat C 1/8 SM and Circling Cat C/D 1/4 SM.

MALSRS MISSED APPROACH:  
Climbing left turn to 2700 on OSH R-166 to BAGOE/20 DME and hold.

ASOS <b>134.0</b>	MILWAUKEE APP CON <b>127.0 263.075</b>	UNICOM <b>123.05 (CTAF) 0</b>
----------------------	---	----------------------------------



CATEGORY	A	B	C	D
S-36	1420-3/4 625 (700-3/4)		1420-1 3/8 625 (700-1 3/8)	1420-1 1/2 625 (700-1 1/2)
<input checked="" type="checkbox"/> CIRCLING	1420-1 612 (700-1)		1520-2 712 (800-2)	1520-2 1/4 712 (800-2 1/4)

EC-3, 27 NOV 2025 to 25 DEC 2025

EC-3, 27 NOV 2025 to 25 DEC 2025