


LOC I-HWV 108.95	APP CRS 059°	Rwy ldg TDZE Apt Elev	4201 77 81
----------------------------	------------------------	-----------------------------	---------------------------------------

ILS or LOC RWY 6

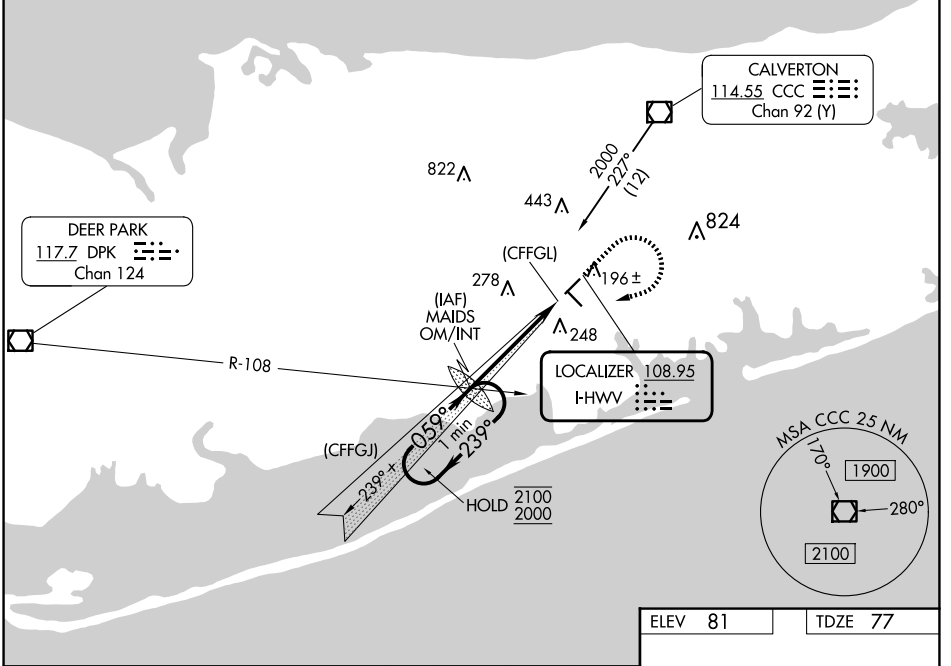
BROOKHAVEN (HWV)

⚠ Rwy 6 helicopter visibility reduction below 1 SM NA. When local altimeter setting not received, use ISP altimeter setting and increase S-ILS 6 DA to 367; increase all MDAs 40 feet. For inop ALS, increase S-ILS 6 all Cats visibility to 7/8 SM and increase S-LOC 6 all Cats visibility to 1 SM. ILS localizer unusable 0.5 NM to threshold. Circling Rwy 6, 1.5 NA at night.

MALSR


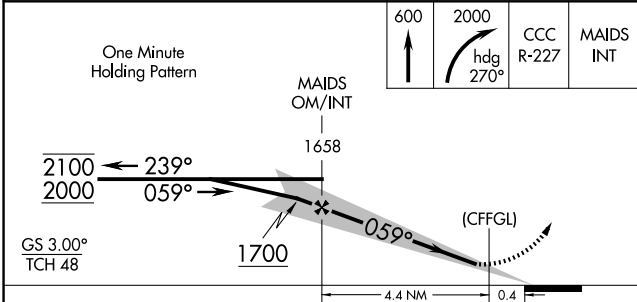
MISSED APPROACH: Climb to 600 then climbing right turn to 2000 on heading 270° and CCC VOR/DME R-227 to MAIDS OM/INT and hold, continue climb-in-hold to 2000.


ASOS 119.625	NEW YORK APP CON 120.05 343.75	CLNC DEL 133.2	UNICOM 122.8 (CTAF) 
------------------------	--	--------------------------	---

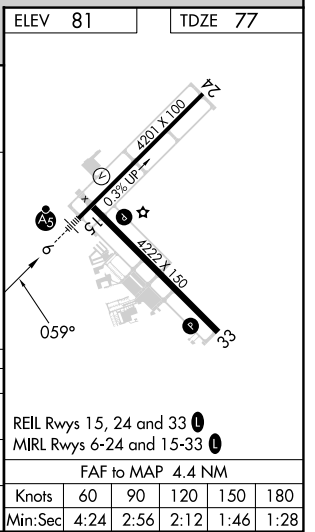


NE-2, 27 NOV 2025 to 25 DEC 2025

NE-2, 27 NOV 2025 to 25 DEC 2025



ELEV 81	TDZE 77			
600	2000	CCC R-227	MAIDS INT	
↑	hdg 270°			
CATEGORY	A	B	C	D
S-ILS 6	339-3/4	262 (300-3/4)		NA
S-LOC 6	540-3/4	463 (500-3/4)		NA
 CIRCLING	560-1	479 (500-1)		NA



REIL Rwy 15, 24 and 33 

MIRL Rwy 6-24 and 15-33 

FAF to MAP 4.4 NM

Knots	60	90	120	150	180
Min:Sec	4:24	2:56	2:12	1:46	1:28