


VOR/DME CCC <b>114.55</b> Chan <b>92 (Y)</b>	APP CRS <b>042°</b>	Rwy Idg <b>4201</b> TDZE <b>77</b> Apt Elev <b>81</b>
--	------------------------	---


# VOR RWY 6

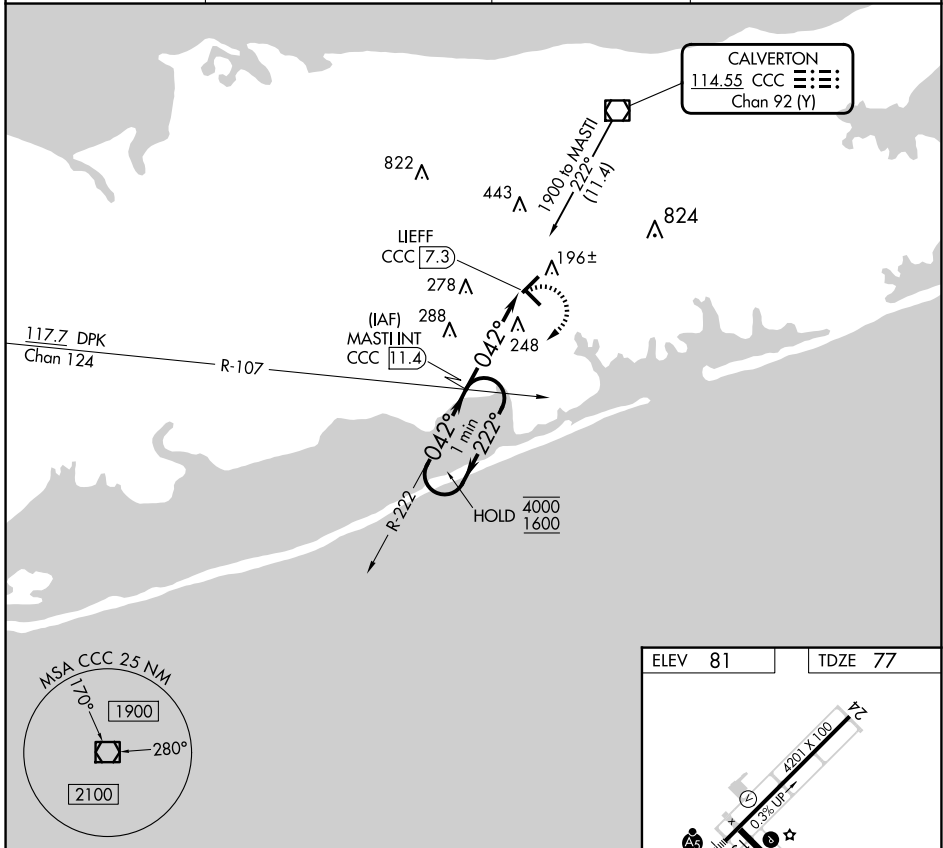
BROOKHAVEN (HWV)

**⚠** Hop table does not apply. Rwy 6 helicopter visibility reduction below 1 SM NA. When local altimeter setting not received, use ISP altimeter setting and increase all MDAs 40 feet. Straight-in Rwy 6 NA at night, Circling Rwy 6, 15 NA at night

**MALSRR** 

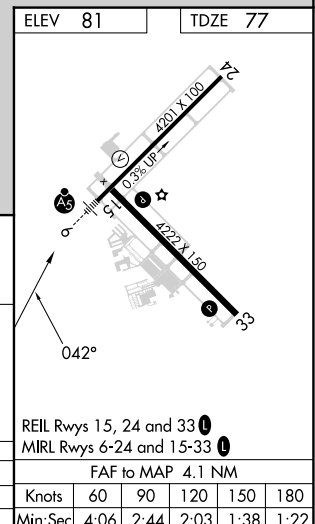
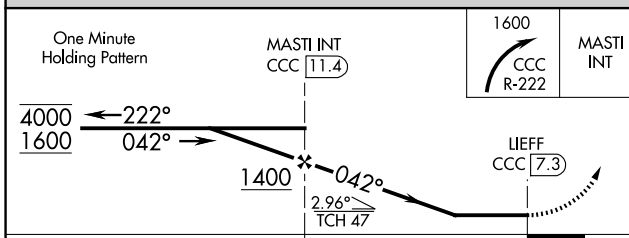
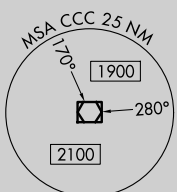
**MISSED APPROACH:** Climbing right turn to 1600 on CCC VOR/DME R-222 to MASTI INT/11.4 DME and hold.

ASOS <b>119.625</b>	NEW YORK APP CON <b>120.05 343.75</b>	CLNC DEL <b>133.2</b>	UNICOM <b>122.8 (CTAF)</b> 
------------------------	--	--------------------------	---



NE-2, 27 NOV 2025 to 25 DEC 2025

NE-2, 27 NOV 2025 to 25 DEC 2025



CATEGORY	A	B	C	D	FAF to MAP 4.1 NM					
S-6	620-1	543 (600-1)		NA	Knots	60	90	120	150	180
 CIRCLING	620-1	539 (600-1)		NA	Min:Sec	4:06	2:44	2:03	1:38	1:22