

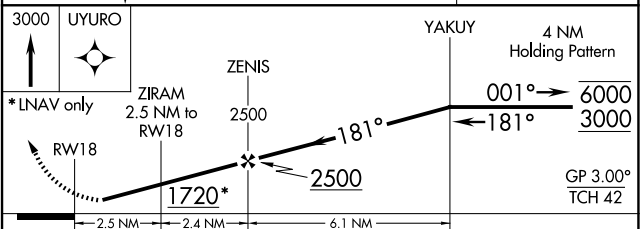
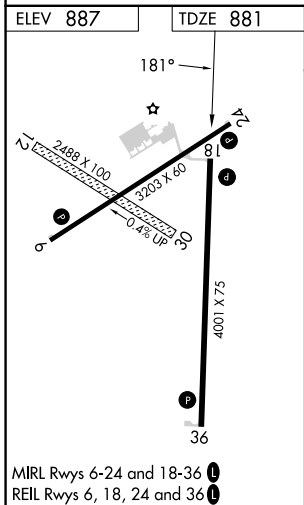
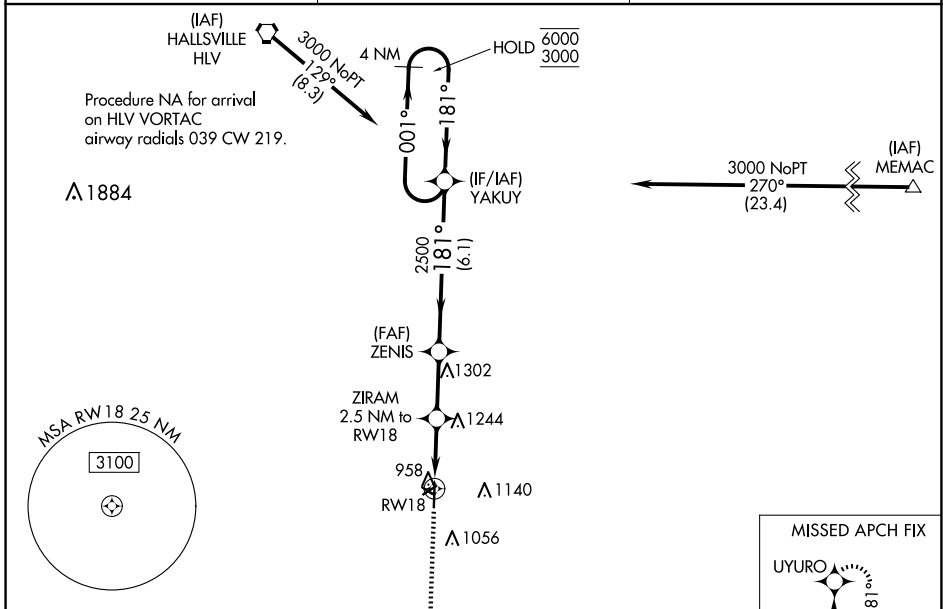
WAAS CH <b>42611</b> <b>W18A</b>	APP CRS <b>181°</b>	Rwy Idg TDZE Apt Elev	<b>4001</b> <b>881</b> <b>887</b>
--	------------------------	-----------------------------	---

# RNAV (GPS) RWY 18

ELTON HENSLEY MEML (F'TT)

RNP APCH.	<p>⚠ NA Circling NA to Rwys 12 and 30. Circling Rwy 24 NA at night. Rwy 18 helicopter visibility reduction below 1 SM NA. Baro-VNAV NA. Use Columbia altimeter setting; when not received use Jefferson City altimeter setting and increase all DA 62 feet, all MDA 80 feet, increase LPV and LNAV/VNAV all Cats visibility ¼ mile, LNAV and Circling Cat C visibility ¼ mile.</p>	<p>MISSED APPROACH: Climb to 3000 direct UYURO and hold.</p>
-----------	--	--

COU ASOS <b>128.45</b>	MIZZU APP CON <b>124.375 353.925</b>	UNICOM <b>122.7 (CTAF) 0</b>
---------------------------	---	---------------------------------



CATEGORY	A	B	C	D
LPV DA	1155-1 274 (300-1)			NA
LNAV/VNAV DA	1313-1½ 432 (500-1½)			NA
LNAV MDA	1520-1 639 (700-1)	1520-1¾ 639 (700-1¾)		NA
<b>C</b> CIRCLING	1520-1 633 (700-1)	1560-2 673 (700-2)		NA

NC-3, 27 NOV 2025 to 25 DEC 2025

NC-3, 27 NOV 2025 to 25 DEC 2025