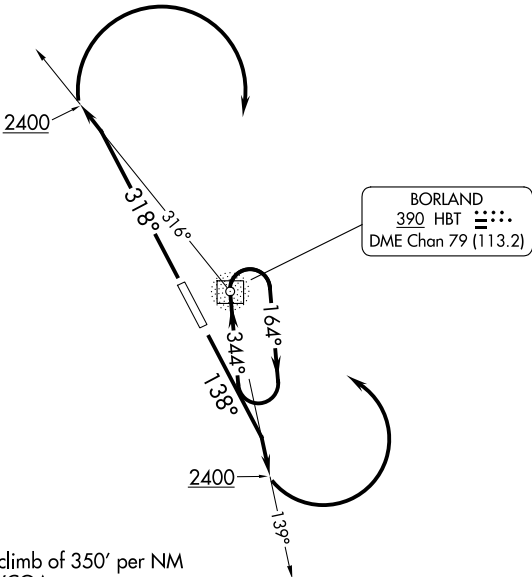


ANCHORAGE CENTER  
125.35 346.3  
COLD BAY RADIO  
122.3  
CTAF  
122.3



NOTE: ADF required.

TAKEOFF MINIMUMS

- Rwy 14: Standard.
- Rwy 32: Standard with minimum climb of 350' per NM to 1200, or 2600-3 for VCOA.

TAKEOFF OBSTACLE NOTES

- Rwy 32: Ships beginning 1493' from DER, crossing extended runway centerline, 100' MSL.  
Vegetation beginning 1.4 NM from DER, 392' right of centerline, up to 6' AGL/256' MSL.  
Vegetation, terrain beginning 1.5 NM from DER, 534' right of centerline, up to 296' MSL.  
Vegetation beginning 1.6 NM from DER, 995' right of centerline, up to 7' AGL/315' MSL.  
Terrain, vegetation beginning 1.7 NM from DER, on and left of centerline, up to 410' MSL.  
Vegetation beginning 1.7 NM from DER, 1493' right of centerline, up to 6' AGL/351' MSL.  
Vegetation beginning 1.9 NM from DER, 161' right of centerline, up to 7' AGL/401' MSL.  
Terrain, vegetation beginning 2 NM from DER, 326' right of centerline, up to 456' MSL.  
Vegetation 2.1 NM from DER, 2753' right of centerline, 5' AGL/478' MSL.  
Terrain, vegetation beginning 2.2 NM from DER, 388' right of centerline, up to 619' MSL.  
Terrain 2.5 NM from DER, 1994' right of centerline, 472' MSL.

NOTE: Chart not to scale.

DEPARTURE ROUTE DESCRIPTION

- TAKEOFF RUNWAY 14: Climb on heading 138° to intercept bearing 139° from HBT NDB to 2400 then climbing left turn direct HBT NDB, thence. . . .
- TAKEOFF RUNWAY 32: Climb on heading 318° to intercept bearing 316° from HBT NDB to 2400 then climbing right turn direct HBT NDB, or for VCOA, cross Sand Point Airport at or above 2500, thence. . . .
- VCOA RUNWAY 32: Obtain ATC approval for VCOA when requesting IFR clearance. Climb in visual conditions to cross Sand Point Airport at or above 2500 then climb direct HBT NDB, thence. . . .
- . . . .continue climb in HBT NDB holding pattern to 10000 before proceeding on course.