

APP CRS	Rwy Idg	3301
240°	TDZE	1213
	Apt Elev	1215

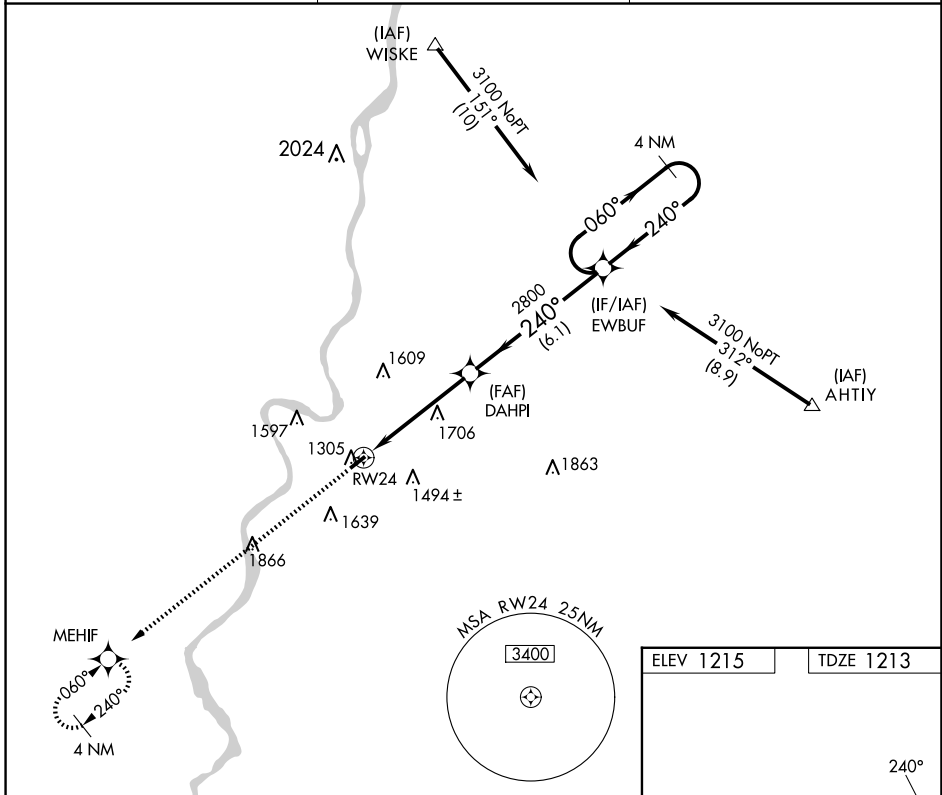
RNAV (GPS) RWY 24
MARSHALL COUNTY (MPG)

RNP APCH.

▼ When local altimeter setting not received, use Wheeling altimeter setting and increase all MDA 60 feet. Rwy 24 helicopter visibility reduction below 3/4 SM NA.

MISSED APPROACH: Climb to 3000 direct MEHIF and hold.

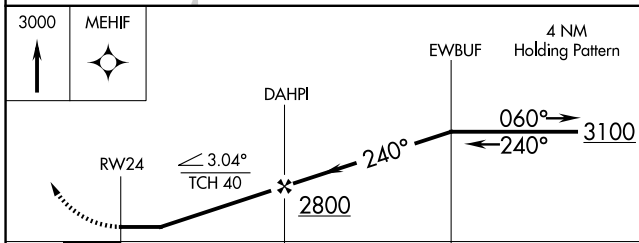
AWOS-3 119.05	CLEVELAND CENTER 126.95 239.30	UNICOM 122.7 (CTAF) 0
-------------------------	--	---------------------------------



NE-4, 27 NOV 2025 to 25 DEC 2025

NE-4, 27 NOV 2025 to 25 DEC 2025

ELEV 1215	TDZE 1213
-----------	-----------



CATEGORY	A	B	C	D
LNAV MDA	1960-1 747 (800-1)	1960-1¼ 747 (800-1¼)	1960-2¼ 747 (800-2¼)	NA
CIRCLING	1960-1 745 (800-1)	1960-1¼ 745 (800-1¼)	1960-2¼ 745 (800-2¼)	NA

