

APP CRS	Rwy Ldg	3150
010°	TDZE	29
	Apt Elev	30

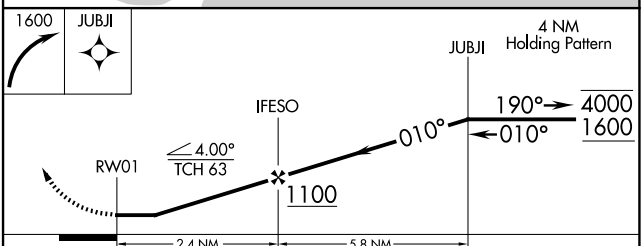
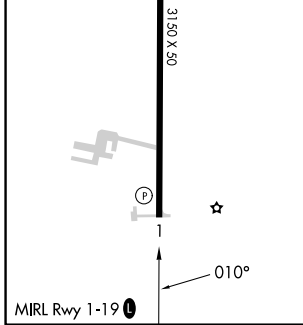
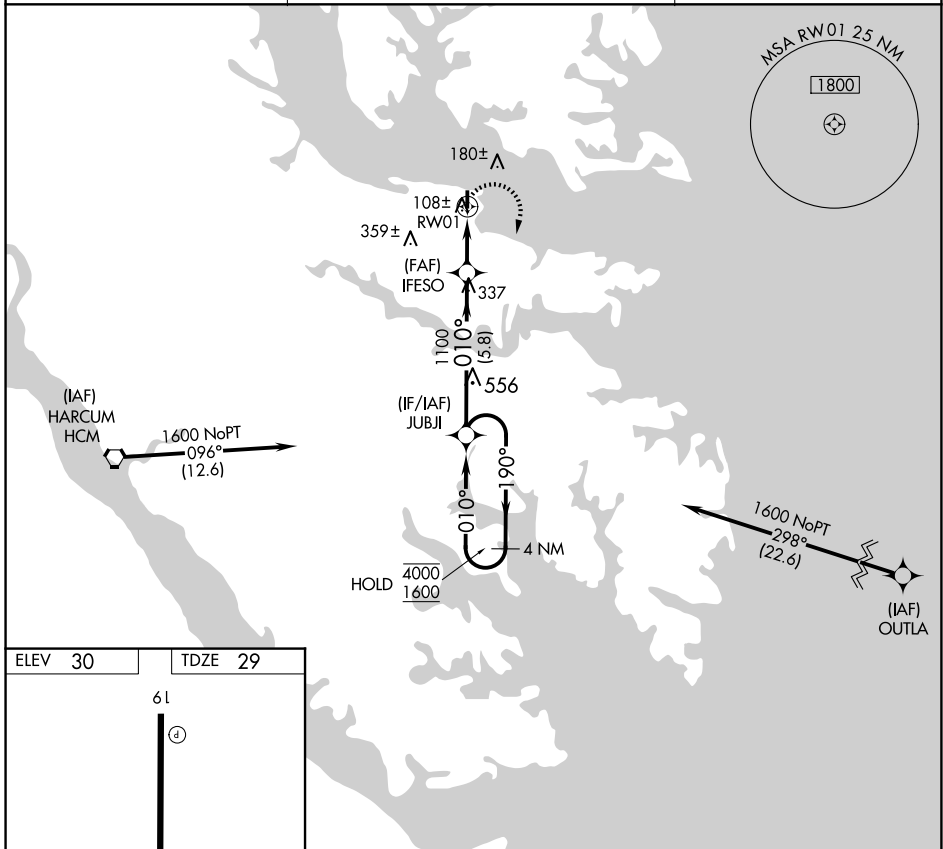
RNAV (GPS) RWY 1

HUMMEL FLD (W75)

RNP APCH - GPS.
 Procedure NA at night.
 Rwy 1 helicopter visibility reduction below 1 SM NA.

MISSED APPROACH: Climbing right turn to 1600 direct JUBJI and hold.

AWOS-3 118.45	NORFOLK APP CON 126.05 370.925	UNICOM 123.0 (CTAF)
-------------------------	--	-------------------------------



CATEGORY	A	B	C	D
RNAV MDA	1040-3	1011 (1100-3)		NA
CIRCLING	1040-3	1010 (1100-3)		NA

NE-3, 27 NOV 2025 to 25 DEC 2025

NE-3, 27 NOV 2025 to 25 DEC 2025