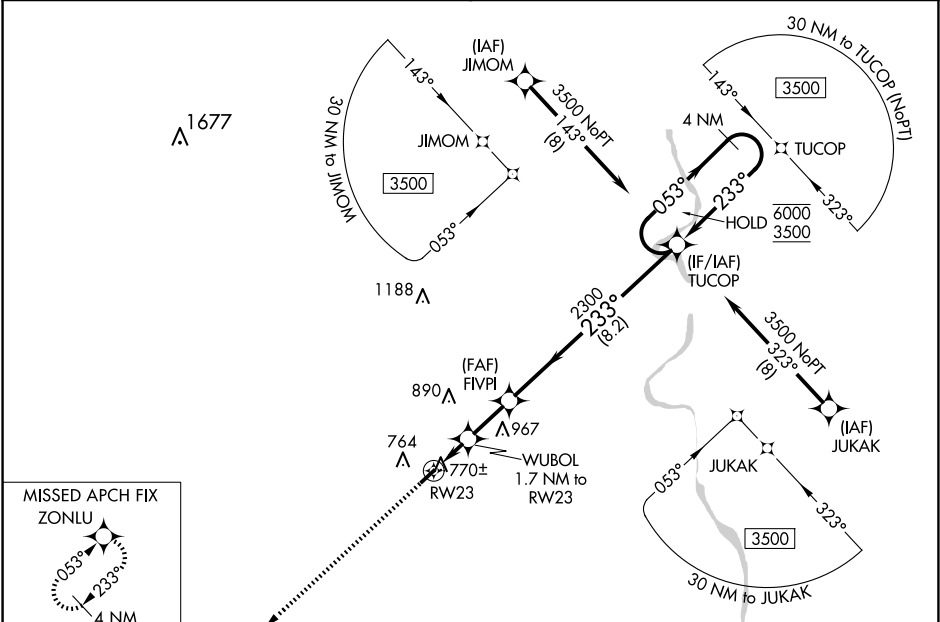


WAAS CH 77535 W23A	APP CRS 233°	Rwy ldg TDZE Apt Elev	3508 610 610
--	------------------------	-----------------------------	---

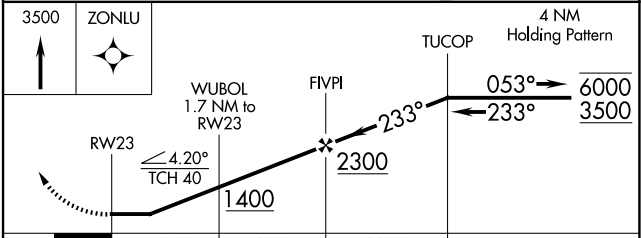
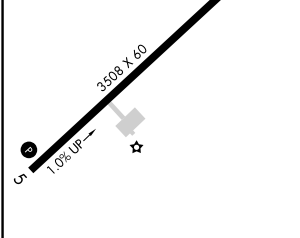
RNAV (GPS) RWY 23

UNION COUNTY, TROY SHELTON FLD (35A)

RNP APCH - GPS.		MISSED APPROACH: Climb to 3500 direct ZONLU and hold, continue climb-in-hold to 3500.
AWOS-3PT 119.45	GREER APP CON ★ 119.4 350.2	UNICOM 122.7 (CTAF) 0



ELEV 610	TDZE 610
----------	----------



CATEGORY	A	B	C	D
LP MDA	1080-1	470 (500-1)		NA
LNAV MDA	1140-1	530 (600-1)		NA
CIRCLING	1180-1	570 (600-1)		NA

SE-2, 27 NOV 2025 to 25 DEC 2025

SE-2, 27 NOV 2025 to 25 DEC 2025