

WAAS CH 90531 W07A	APP CRS 068°	Rwy Ldg TDZE 5001 653	Apt Elev 653
----------------------------------------	------------------------	-------------------------------------------	------------------------

RNAV (GPS) RWY 7

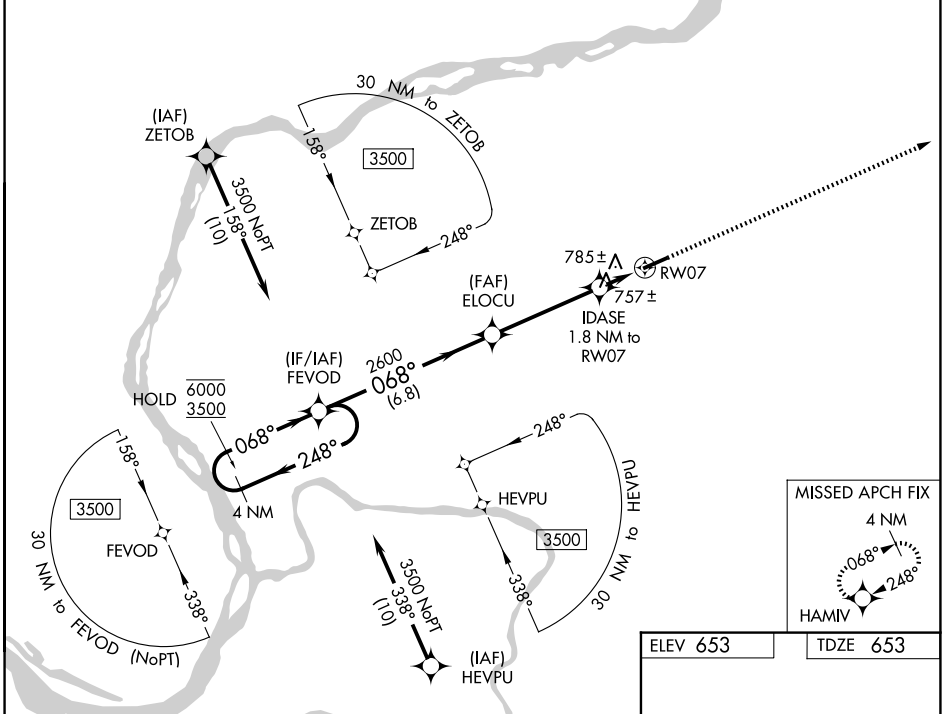
MARION-CRITTENDEN COUNTY JAMES C JOHNSON RGNL (GDA)

RNP APCH - GPS.

▼
▲ Rwy 7 helicopter visibility reduction below 3/4 SM NA.

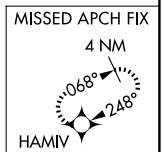
MISSED APPROACH:
Climb to 3500 direct
HAMIV and hold.

AWOS-3P 118.15	MEMPHIS CENTER 133.65 292.15	CTAF 122.9 ①
--------------------------	----------------------------------------	-------------------------------

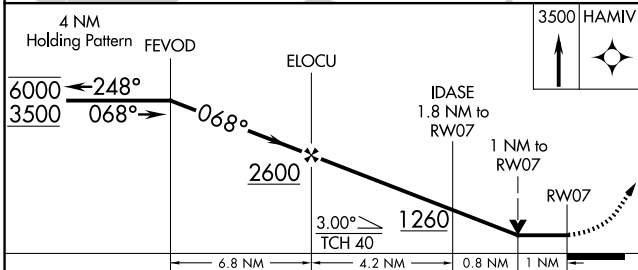


SE-1, 27 NOV 2025 to 25 DEC 2025

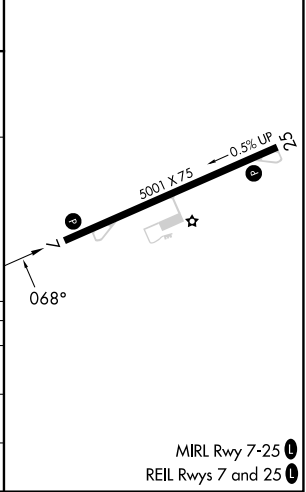
SE-1, 27 NOV 2025 to 25 DEC 2025



ELEV 653	TDZE 653
----------	----------



CATEGORY	A	B	C	D
LP MDA	1020-1		367 (400-1)	
LNAV MDA	1040-1	387 (400-1)	1040-1 1/8	387 (400-1 1/8)
CIRCLING	1160-1 507 (600-1)	1360-1 707 (800-1)	1380-2 727 (800-2)	1380-2 1/4 727 (800-2 1/4)



MIRL Rwy 7-25 **①**
REIL Rwys 7 and 25 **①**