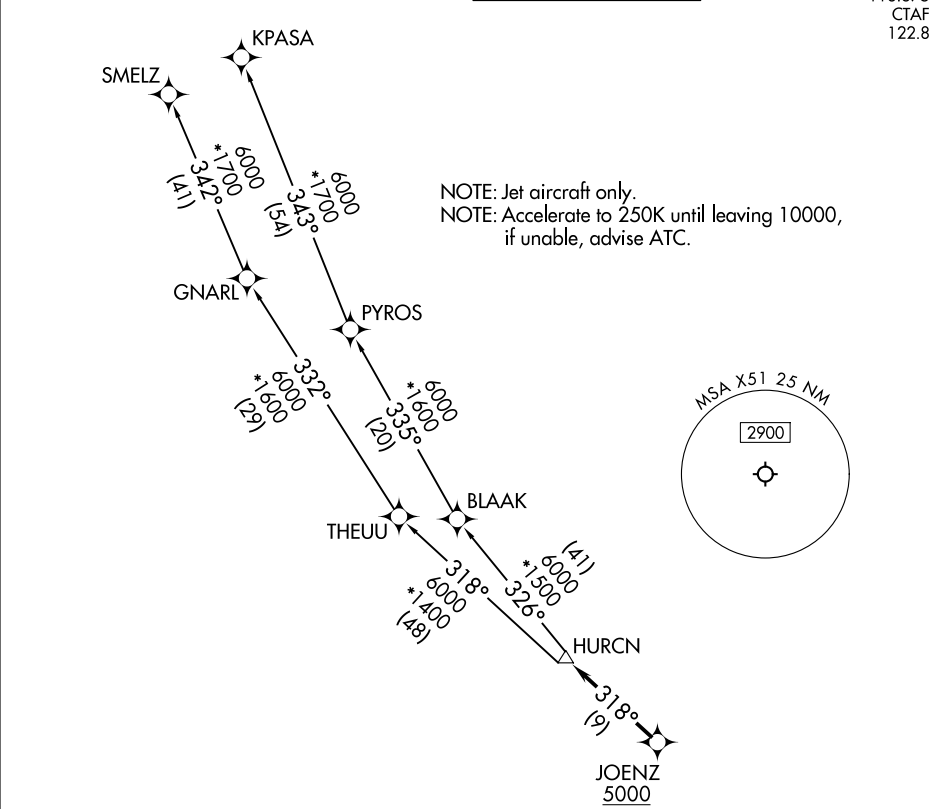


RNAV-1 DME/DME/IRU or GPS.	TOP ALTITUDE: ASSIGNED BY ATC	MIAMI DEP CON 125.5 354.1 AWOS-3 118.375 CTAF 122.8
RADAR required.		



TAKEOFF MINIMUMS
Rwy 10: Standard with minimum climb of 500'/NM to 2400.
Rwy 18: Standard with minimum climb of 500'/NM to 1800.
Rwy 28: Standard with minimum climb of 500'/NM to 1900.
Rwy 36: Standard with minimum climb of 500'/NM to 2200.

NOTE: Chart not to scale. (CONTINUED ON FOLLOWING PAGE)

SE-3, 27 NOV 2025 to 25 DEC 2025

SE-3, 27 NOV 2025 to 25 DEC 2025