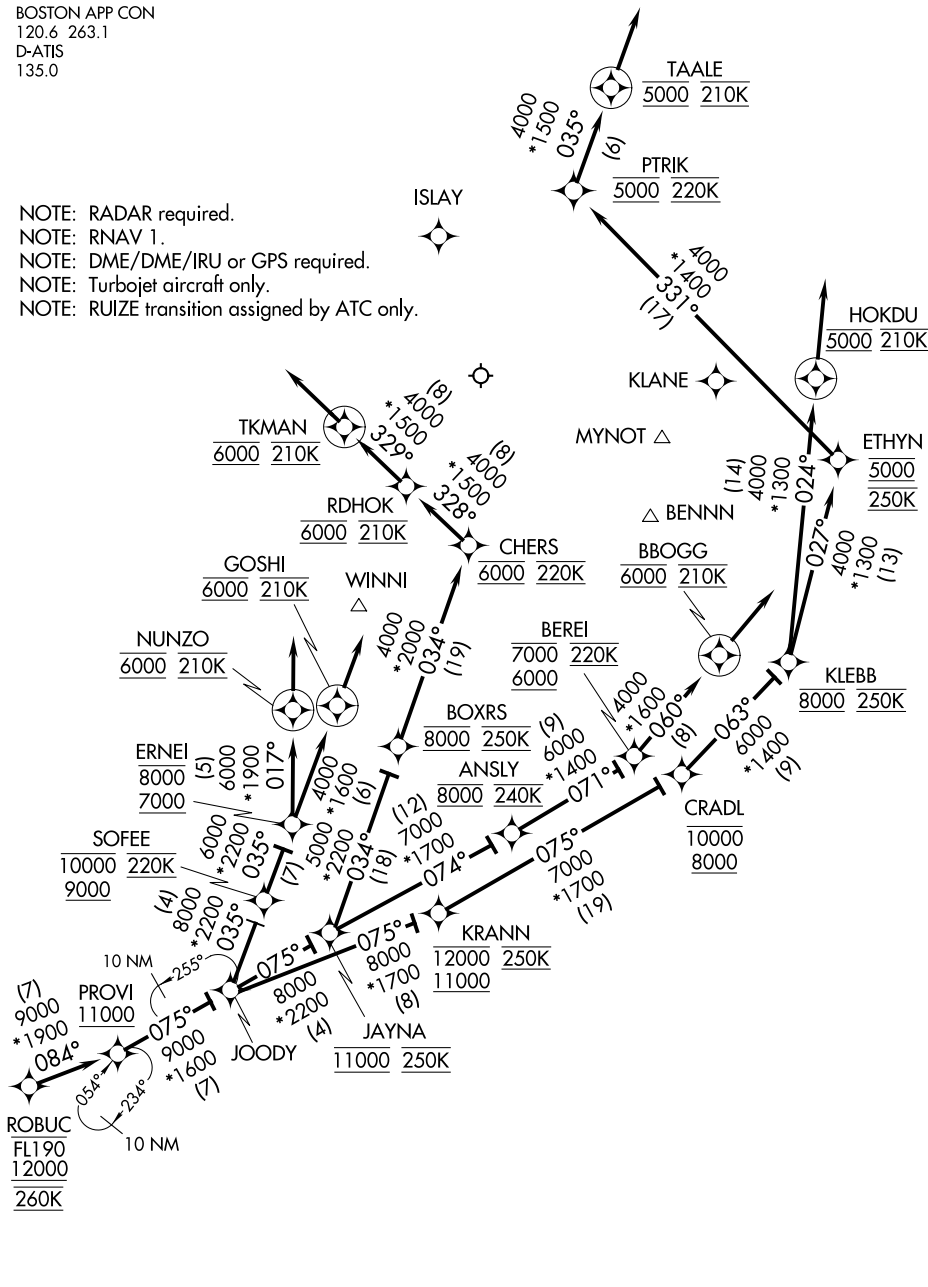


ROBUC THREE ARRIVAL (RNAV) Arrival Routes

BOSTON APP CON
120.6 263.1
D-ATIS
135.0

- NOTE: RADAR required.
- NOTE: RNAV 1.
- NOTE: DME/DME/IRU or GPS required.
- NOTE: Turbojet aircraft only.
- NOTE: RUIZE transition assigned by ATC only.



NE-1, 25 DEC 2025 to 22 JAN 2026

NE-1, 25 DEC 2025 to 22 JAN 2026

NOTE: Chart not to scale.

(NARRATIVE ON FOLLOWING PAGE)

ROBUC THREE ARRIVAL (RNAV) Arrival Routes