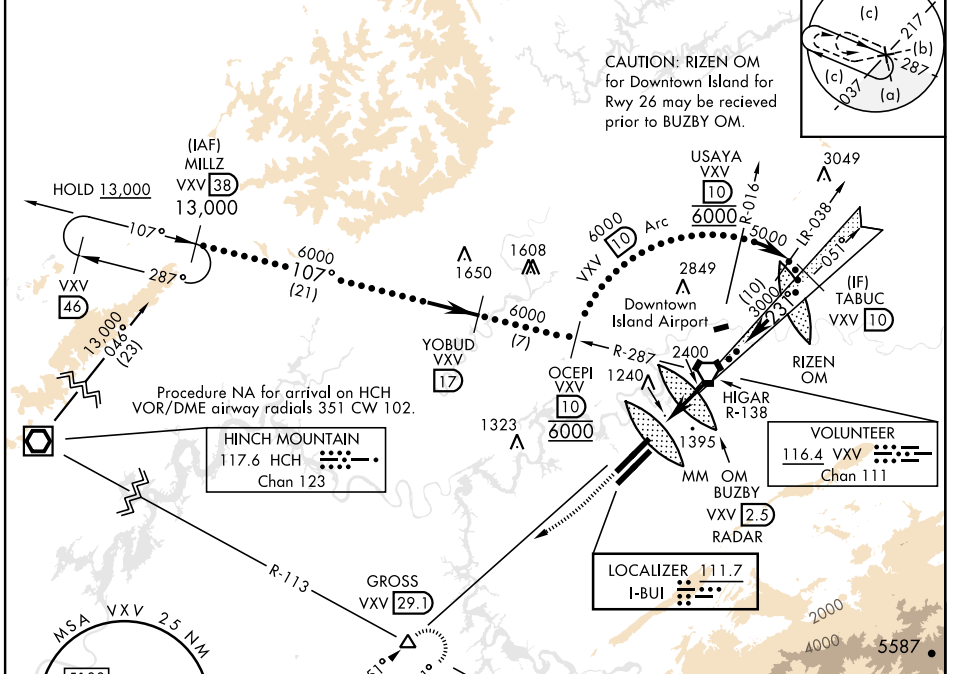


HI-ILS or LOC RWY 23R

LOC I-BUI 111.7	APCH CRS 231°	Rwy ldg TDZE Arprt Elev 9495 984 986	[USAF]	MC GHEE TYSON (KTYS)
DME required		ALSF-2	MISSED APPROACH: Climb to 2000 then dimbing right turn to 4000 on heading 240° and VXV VORTAC R-231 to GROSS/VXV 29.1 DME and hold.	
*When ALS inop, increase CAT E RVR to 40, vis to ¾ mile. **When ALS inop, increase vis to 1½ miles.				

ATIS 128.35	KNOXVILLE APP CON 123.9 360.8	KNOXVILLE TOWER 121.2 257.8	GND CON 121.9 348.6	CLNC DEL 121.65
-----------------------	---	---------------------------------------	-------------------------------	---------------------------

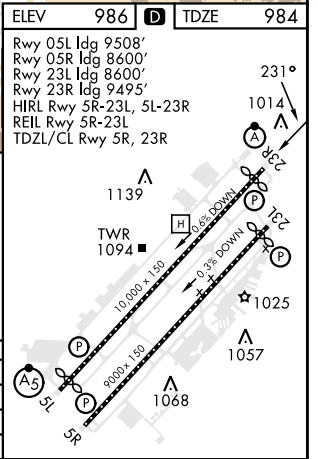
RVR 1800 authorized with use of FD or AP or HUD to DA (NA when using altimeter setting).



ELEV 986	TDZE 984
Rwy 05L ldg 9508'	
Rwy 05R ldg 8600'	
Rwy 23L ldg 8600'	
Rwy 23R ldg 9495'	
HIRL Rwy 5R-23L, 5L-23R	
REIL Rwy 5R-23L	
TDZL/CL Rwy 5R, 23R	

2000	4000	GROSS VXV 29.1
hdg 240°		
C	D	E
0.3	3.8 NM	
GS 3.00° TCH 53		

CATEGORY	C	D	E
S-ILS 23R *	1184/1800	200	(200-½)
S-LOC 23R **	1560-1¼	576	(600-1¼)
CIRCLING	1660-2 674 (700-2)	1900-3 914	(1000-3)



HI-ILS or LOC RWY 23R

SE-1, 25 DEC 2025 to 22 JAN 2026

SE-1, 25 DEC 2025 to 22 JAN 2026