

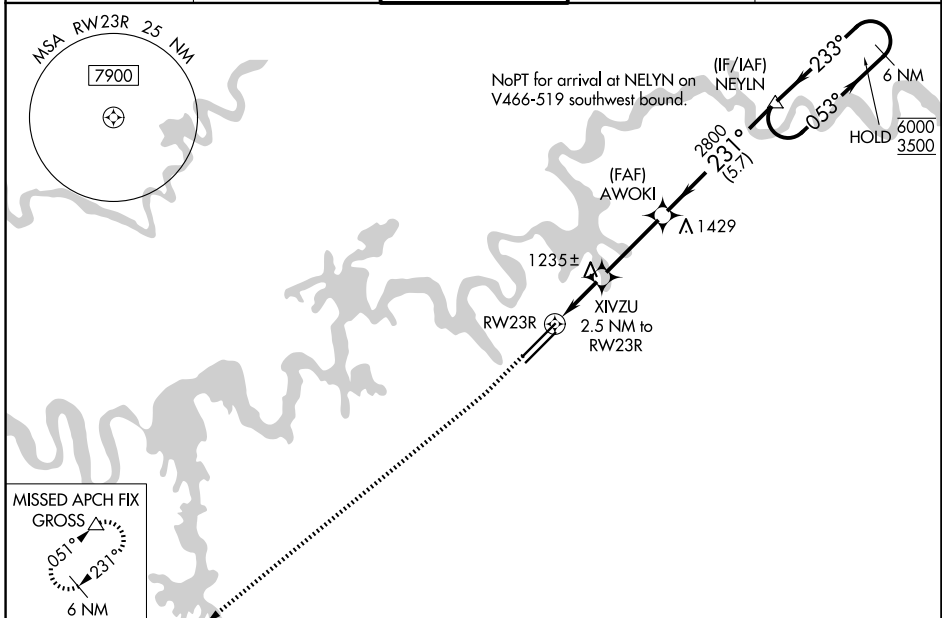
WAAS CH <b>81902</b> <b>W23A</b>	APP CRS <b>231°</b>	Rwy Ldg TDZE Apt Elev	<b>9495</b> <b>984</b> <b>986</b>
--	------------------------	-----------------------------	---

# RNAV (GPS) RWY 23R

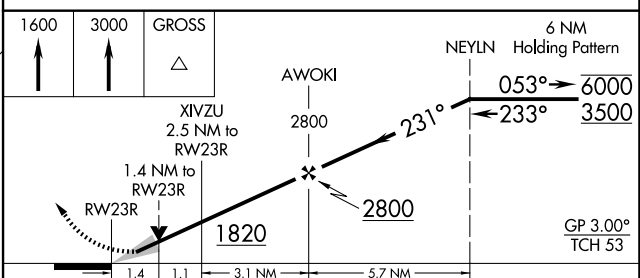
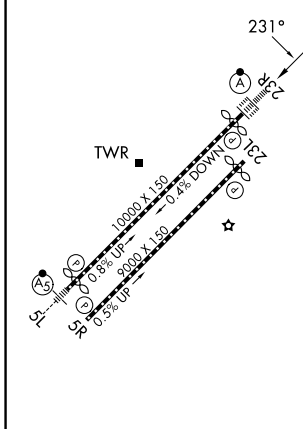
MC GHEE TYSON (T'YS)

RNP APCH - GPS.		ALSIF-2	MISSED APPROACH: Climb to 1600 then climb to 3000 direct GROSS and hold.	
<p>For uncompensated Baro-VNAV systems, LNAV/VNAV NA below -10°C or above 54°C. For inop ALS, increase LNAV Cat C/D visibility to 1½ SM.</p>				

ATIS <b>128.35</b>	KNOXVILLE APP CON <b>123.9 360.8</b>	KNOXVILLE TOWER <b>121.2 257.8</b>	GND CON <b>121.9 348.6</b>	CLINC DEL <b>121.65</b>
-----------------------	---	---------------------------------------	-------------------------------	----------------------------



ELEV 986	<b>D</b>	TDZE 984
----------	----------	----------



1600	3000	GROSS	6 NM	
AWOKI		2800	NEYLN Holding Pattern	
XIVZU		2800	053° → 6000	
RW23R		1820	← 233° 3500	
1.4		1.1	GP 3.00°	
3.1 NM		5.7 NM	TCH 53	
CATEGORY	A	B	C	D
LPV DA	1184/18		200 (200-½)	
LNAV/VNAV DA	1529-1½		545 (600-1½)	
LNAV MDA	1500/24	516 (600-½)	1500/55	516 (600-1)
CIRCLING	1500-1 514 (600-1)	1560-1 574 (700-1)	1660-2 674 (700-2)	1900-3 914 (1000-3)

HIRL Rws 5L-23R and 5R-23L  
REIL Rws 5R and 23L  
TDZ/CL Rws 5R and 23R

SE-1, 25 DEC 2025 to 22 JAN 2026

SE-1, 25 DEC 2025 to 22 JAN 2026