

LOC I-MGM 109.9	APP CRS 097°	Rwy Ldg TDZE Apt Elev	9020 219 232
---------------------------	------------------------	-----------------------------	---

ILS Z or LOC Z RWY 10

MONTGOMERY RGNL (DANNELLY FLD) (MGM)

RADAR or DME or ADF required.

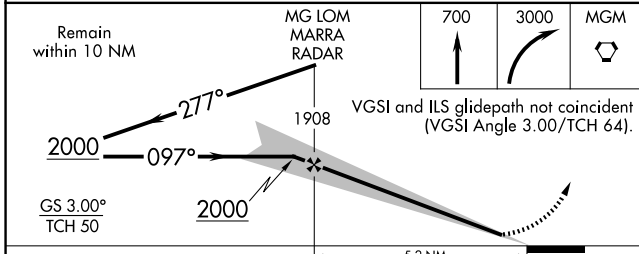
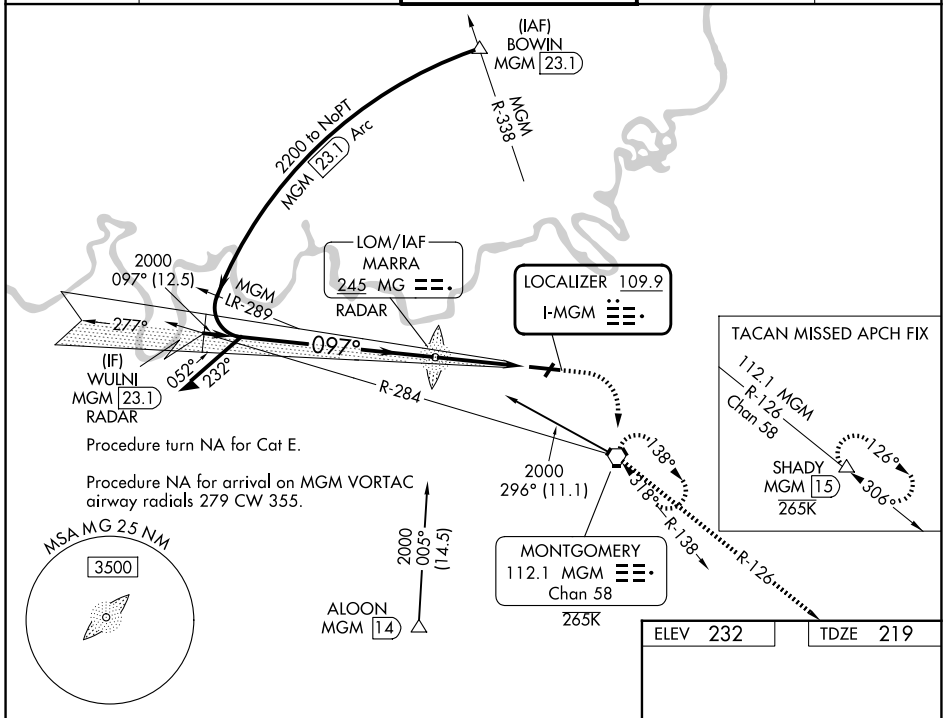
▼ Circling NA for Cat E north of Rwy 10-28. For inop ALS, increase S-ILS 10** Cat E visibility to RVR 4000, and increase S-LOC 10 Cat E visibility to 1 $\frac{3}{8}$ SM. **RVR 1800 authorized with the use of FD or AP or HUD to DA.

MALSR



MISSED APPROACH: Climb to 700 then climbing right turn to 3000 direct MGM VORTAC and hold, continue climb-in-hold to 3000 (TACAN aircraft continue climb to 3500 on MGM VORTAC R-126 to SHADY/MGM 1.5 DME and hold SE, RT, 306° inbound).

ATIS 120.675	MONTGOMERY APP CON* 124.0 363.025	DANNELLY TOWER* 119.7 (CTAF) 360.85	GND CON 121.7 348.6	UNICOM 122.95
------------------------	---	---	-------------------------------	-------------------------



ELEV 232	TDZE 219
REIL Rwy 3	
MIRL Rwy 3-21	
HIRL Rwy 10-28	
FAF to MAP 5.2 NM	
CIRCLING	700-1 468 (500-1)
S-LOC 10	660/24 441 (500- $\frac{1}{2}$)
S-ILS 10**	419/24 200 (200- $\frac{1}{2}$)
Knots	60 90 120 150 180
Min:Sec	5:12 3:28 2:36 2:05 1:44

SE-4, 25 DEC 2025 to 22 JAN 2026

SE-4, 25 DEC 2025 to 22 JAN 2026