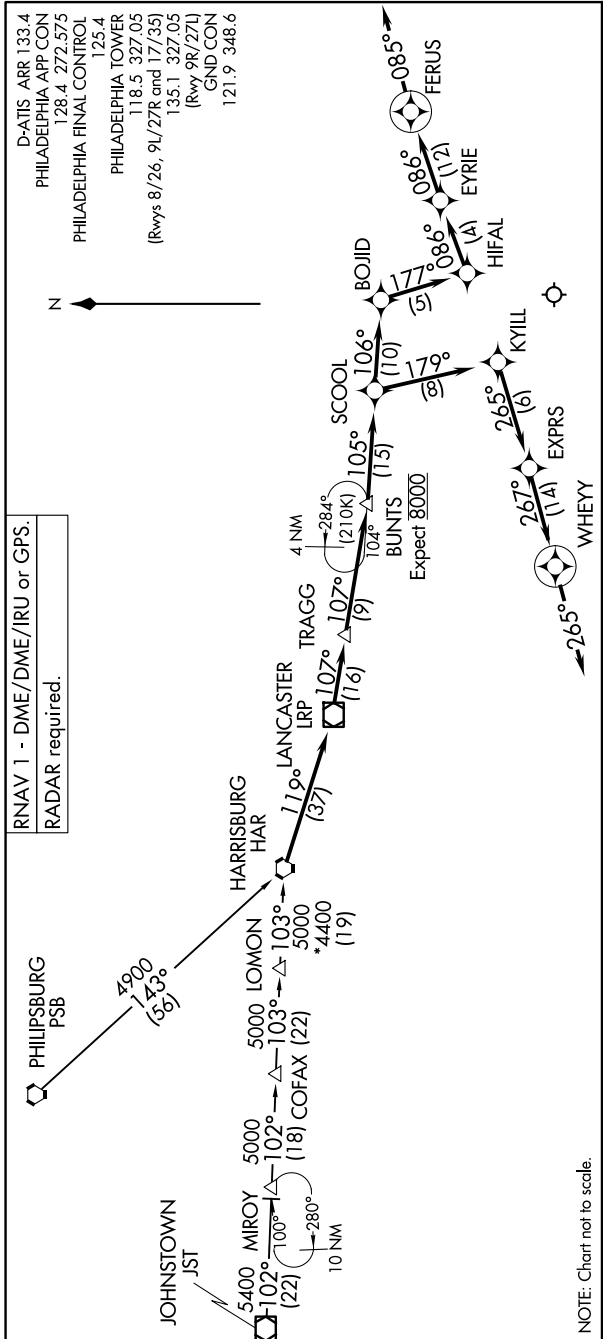


BOJID FOUR ARRIVAL (RNAV)

NE-4, 25 DEC 2025 to 22 JAN 2026



NOTE: Chart not to scale.

RNAV 1 - DME/DME/IRU or GPS.
RADAR required.

D-ATIS ARR 133.4
PHILADELPHIA APP CON
128.4 272.575
PHILADELPHIA FINAL CONTROL
125.4
PHILADELPHIA TOWER
118.5 327.05
(Rwys 8/26, 9L/27R and 17/35)
135.1 327.05
(Rwy 9R/27L)
GND CON
121.9 348.6

ARRIVAL ROUTE DESCRIPTION

JOHNSTOWN TRANSITION (JST.BOJID4):
PHILIPSBURG TRANSITION (PSB.BOJID4):

From HAR VORTAC on track 119° to LRP LANCASTER, then on track 107° to TRAGG, then on track 107° to BUNTS.
LANDING RUNWAYS 9L/R: From BUNTS on track 105° to SCOOOL, then on track 179° to KYILL, then on track 265° to EXPRS, then on track 267° to WHEYY, then on heading 265°. Expect RADAR vectors to final approach course.
LANDING RUNWAYS 27L/R: From BUNTS on track 105° to SCOOOL, then on track 106° to BOJID, then on track 177° to HIFAL, then on track 086° to EYRIE, then on heading 085°. Expect RADAR vectors to final approach course.

NE-4, 25 DEC 2025 to 22 JAN 2026