

PAATS FOUR ARRIVAL (RNAV) Transition Routes

PHILADELPHIA APP CON
133.875 317.55
MQS AWOS-3 126.25
PHL D-ATIS ARR 133.4
PNE ATIS 121.15
TTN ATIS 126.775

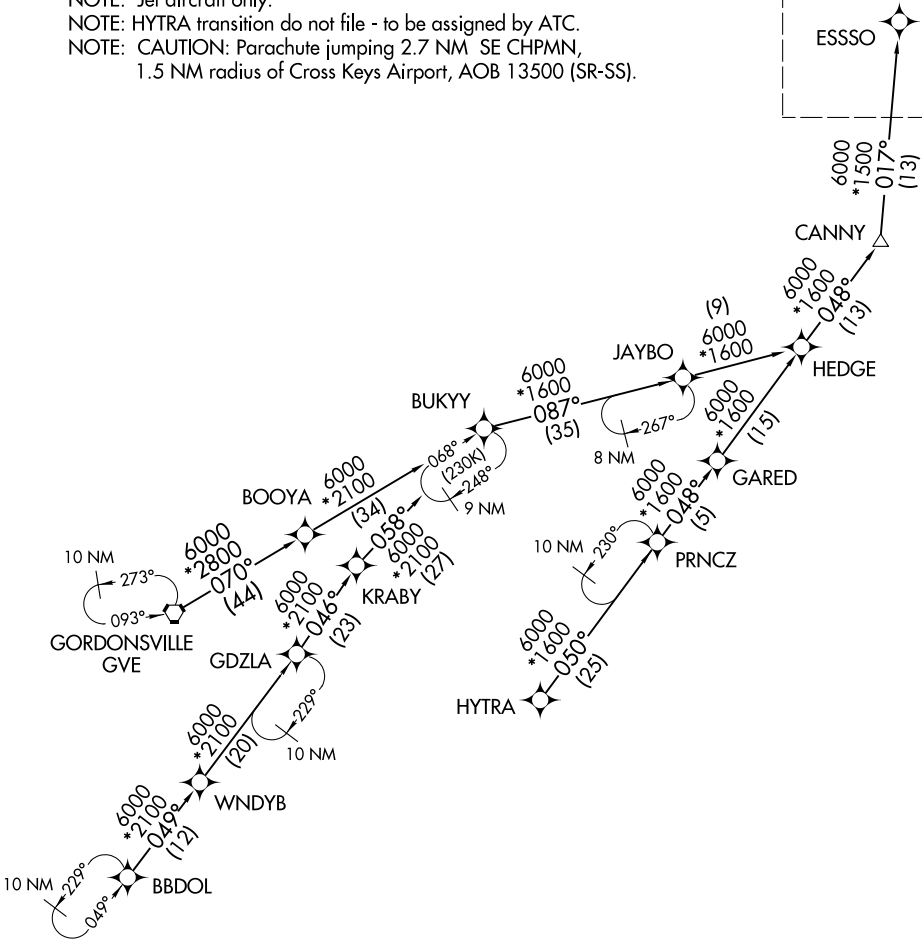
RNAV 1 - DME/DME/IRU or GPS

RADAR required

BBDOL TRANSITION (BBDOL.PAATS4):
GORDONSVILLE TRANSITION (GVE.PAATS4):
HYTRA TRANSITION (HYTRA.PAATS4):

- NOTE: Jet aircraft only.
- NOTE: HYTRA transition do not file - to be assigned by ATC.
- NOTE: CAUTION: Parachute jumping 2.7 NM SE CHPMN, 1.5 NM radius of Cross Keys Airport, AOB 13500 (SR-SS).

See following page for Arrival Routes.



NE-4, 25 DEC 2025 to 22 JAN 2026

NE-4, 25 DEC 2025 to 22 JAN 2026

NOTE: Chart not to scale.

(CONTINUED ON FOLLOWING PAGE)