

HI-TACAN Z RWY 13

TACAN DMA Chan 123	APCH CRS 133°	Rwy Idg 13,645 TDZE 2615 Arprt Elev 2704
------------------------------	-------------------------	---

[USAF]

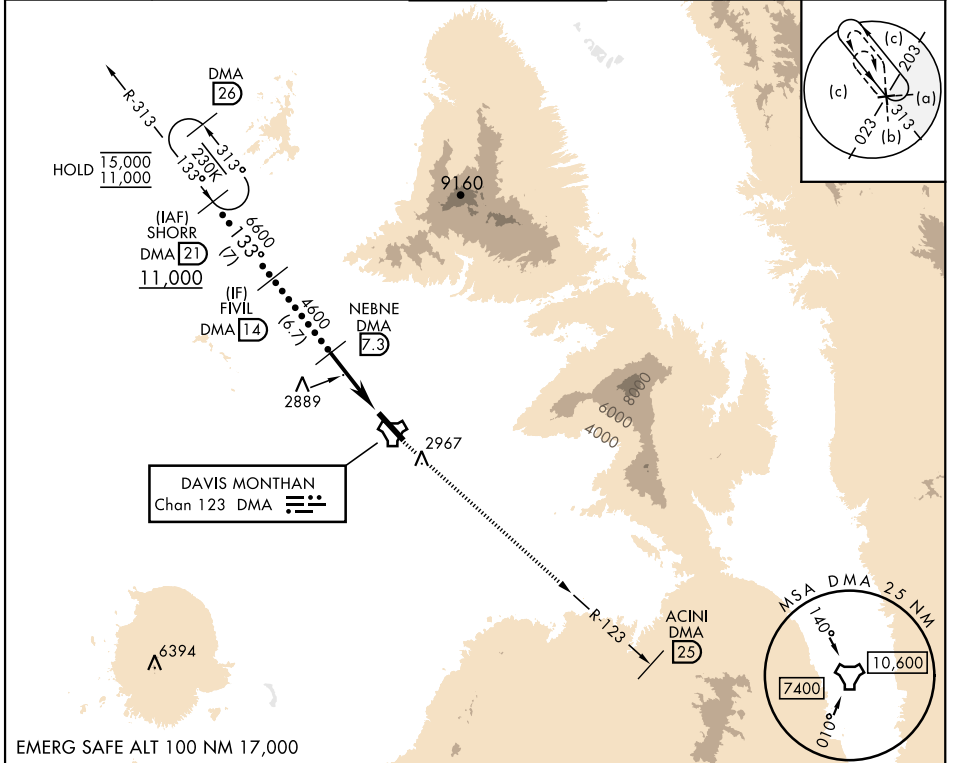
DAVIS-MONTHAN AFB (KDMA)

RNAV or RADAR required.

▼ *Circling not authorized SW of Rwy 13-31.

MISSED APPROACH: Climbing to 8000 intercept DMA TACAN R-123 to ACINI. Expect RADAR vectors.

ATIS★ 132.3 270.1	TUCSON APP CON 066°-274° 119.4 318.1 275°-065° 125.1 269.55	TOWER 118.85 253.5	GND CON 121.8 275.8	CLNC DEL 121.8 275.8
-----------------------------	---	------------------------------	-------------------------------	--------------------------------



EMERG SAFE ALT 100 NM 17,000

	SHORR DMA 21 (11,000)	FIVIL DMA 14 (6,600)	NEBNE DMA 7.3 (4,600)	DMA 3.1 (3,170)	ESALE DMA 2 (2,615)	DMA TACAN	ACINI DMA 25 (7,400)
				3.17° TCH 58			
				5.3 NM	0.5 NM		
CATEGORY	C		D		E		
S-13	3160-1%		545	(500-1%)			
CIRCLING*	3280-1% 576 (600-1%)		3420-2¼ 716 (800-2¼)		3460-2¾ 756 (800-2¾)		
					ELEV 2704 TDZE 2615		
					HIRL Rwy 13-31 REIL Rwy 13		

TUCSON, ARIZONA 32°10'N-110°53'W DAVIS-MONTHAN AFB (KDMA)

Orig 28NOV24

HI-TACAN Z RWY 13

SW-4, 25 DEC 2025 to 22 JAN 2026

SW-4, 25 DEC 2025 to 22 JAN 2026