

HI-TACAN Z RWY 31

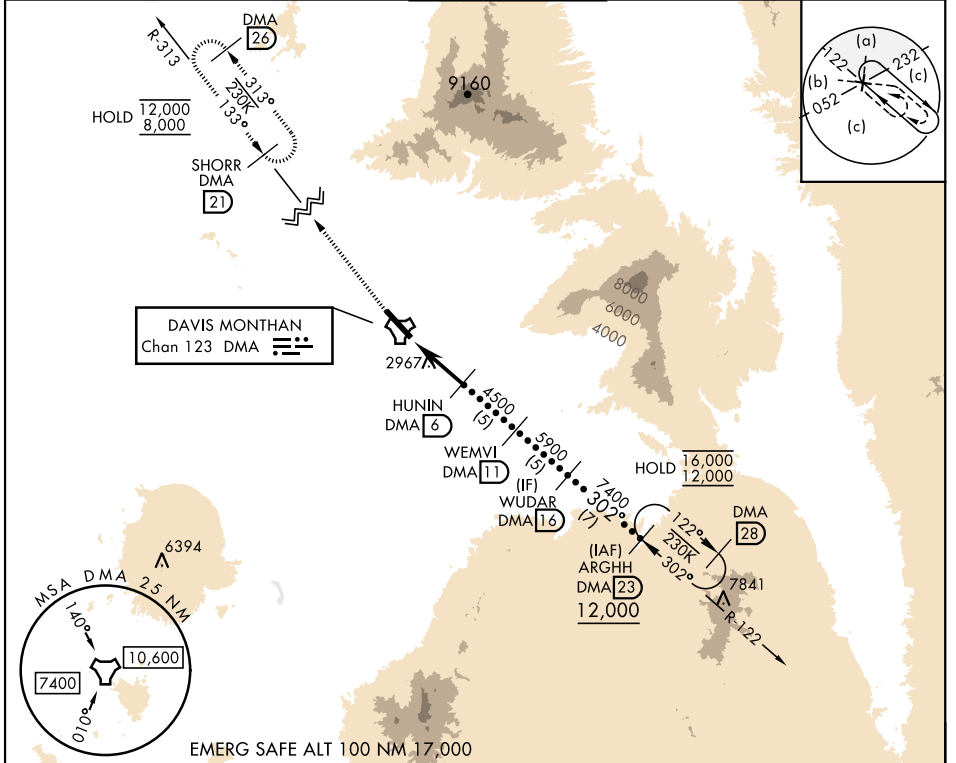
TACAN DMA Chan 123	APCH CRS 302°	Rwy ldg 13,645 TDZE 2704 Arprt Elev 2704
-----------------------	------------------	--

[USAF]

DAVIS-MONTHAN AFB (KDMA)

<p>▼ * When ALS inop, increase vis to 2 miles. ** Circling not authorized SW of Rwy 13-31.</p>	<p>ALSF-1 (A1)</p>	<p>MISSED APPROACH: Climb to 8000, intercept DMA TACAN R-313 to SHORR and hold, continue climb-in-hold to 8000.</p>
--	------------------------	---

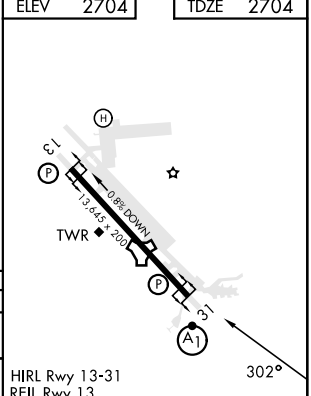
<p>ATIS★ 132.3 270.1</p>	<p>TUCSON APP CON 066°-274° 119.4 318.1 275°-065° 125.1 269.55</p>	<p>TOWER 118.85 253.5</p>	<p>GND CON 121.8 275.8</p>	<p>CLNC DEL 121.8 275.8</p>
------------------------------	--	-------------------------------	--------------------------------	---------------------------------



SW-4, 25 DEC 2025 to 22 JAN 2026

SW-4, 25 DEC 2025 to 22 JAN 2026

<p>8000 DMA R-313</p>	<p>SHORR DMA (21)</p>	<p>WUDAR DMA (16)</p>	<p>ARGHH DMA (23)</p>	<p>ELEV 2704</p>	<p>TDZE 2704</p>
<p>↑ DMA TACAN</p> <p>ZUSTI DMA (13) 2,800</p> <p>HUNIN DMA (6) 4,500</p> <p>WEMVI DMA (11) 5,900</p> <p>ARGHH DMA (23) 12,000</p> <p>3.13° TCH 59</p> <p>0.5 NM 4.7 NM</p>				<p>12,000</p> <p>7,400</p> <p>5,900</p> <p>4,500</p>	
CATEGORY	C	D	E		
S-31*	3420-15%	716 (800-15%)			
CIRCLING**	3420-2 716 (800-2)	3420-2¼ 716 (800-2¼)	3460-2¾ 756 (800-2¾)	<p>HIRL Rwy 13-31</p> <p>REIL Rwy 13</p>	



HI-TACAN Z RWY 31