

TUCSON, ARIZONA

RNAV (GPS) RWY 31

WAAS CH 71267 W31A	APCH CRS 308°	Rwy ldg 13,645	TDZE 2704
		Arprt Elev 2704	

-(USAF)

DAVIS MONTHAN AFB (KDMA)

RNP APCH

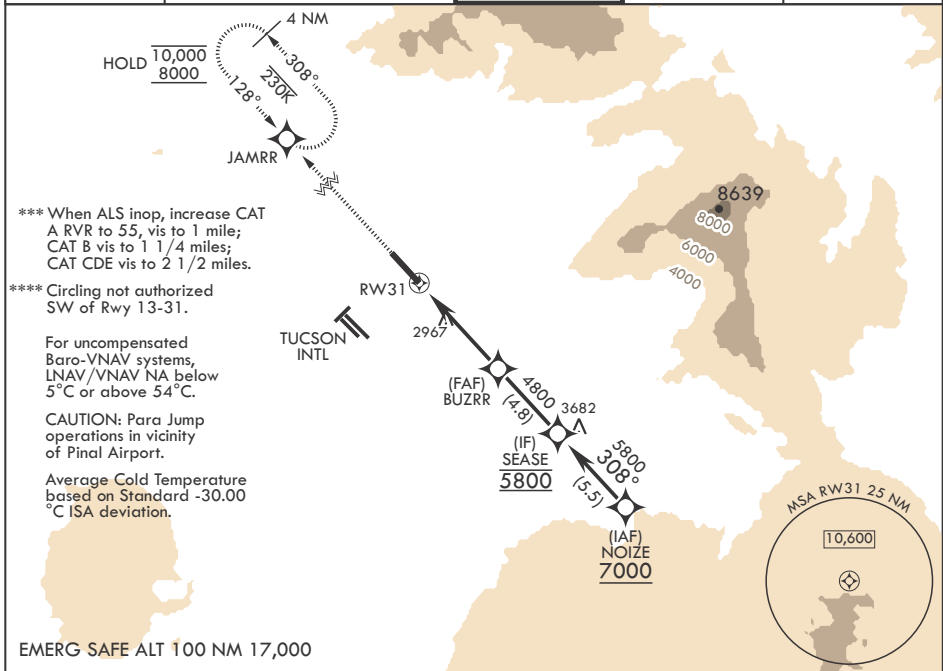
ALSF-1

MISSED APPROACH: Climb to 8000 direct JAMRR and hold, continue climb-in-hold to 8000.

▼ * When ALS inop, increase vis to 1 3/8 miles.
** When ALS inop, increase RVR to 45, vis to 7/8 mile.



ATIS★ 132.3 270.1	TUCSON APP CON/DEP CON 119.4 269.55	TOWER 118.85 253.5	GND CON 121.8 275.8	CLNC DEL 121.8 275.8
----------------------	--	-----------------------	------------------------	-------------------------



*** When ALS inop, increase CAT
A RVR to 55, vis to 1 mile;
CAT B vis to 1 1/4 miles;
CAT CDE vis to 2 1/2 miles.

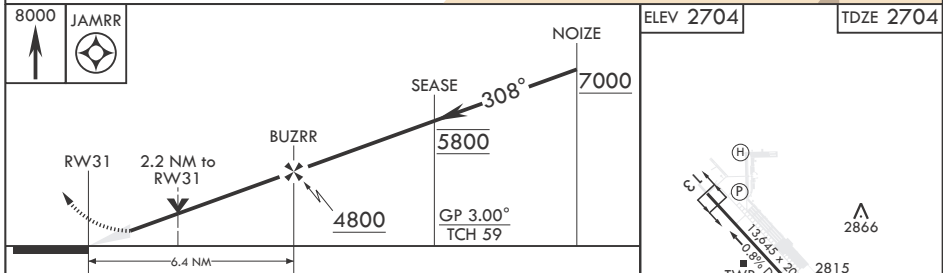
**** Circling not authorized
SW of Rwy 13-31.

For uncompensated
Baro-VNAV systems,
LNAV/VNAV NA below
5°C or above 54°C.

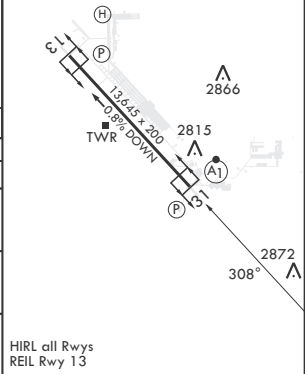
CAUTION: Para Jump
operations in vicinity
of Pinal Airport.

Average Cold Temperature
based on Standard -30.00
°C ISA deviation.

EMERG SAFE ALT 100 NM 17,000



CATEGORY	A	B	C	D	E
LPV DA*	3168/50		464	(500-1)	
LNAV/VNAV DA**	2966/24 262 (300-½)	2977/24 273 (300-½)	2985/24 281 (300-½)	2996/24	292 (300-½)
LNAV MDA***	3480/24 776 (800-½)	3480/40 776 (800-¾)	3480-1¼	776 (800-1¼)	
☐ CIRCLING****	3480-1 776 (800-1)	3480-1¼ 776 (800-1¼)	3480-2½ 776 (800-2½)	3480-2¼ 776 (800-2¼)	



TUCSON, ARIZONA
Orig 28NOV24

32°10'N - 110°53'W

DAVIS MONTHAN AFB (KDMA)

RNAV (GPS) RWY 31

SW-4, 25 DEC 2025 to 22 JAN 2026

SW-4, 25 DEC 2025 to 22 JAN 2026