

TUCSON, ARIZONA

# TACAN Y RWY 13

DAVIS-MONTHAN AFB (KDMA)

TACAN DMA Chan <b>123</b>	APCH CRS <b>133°</b>	Rwy Idg <b>13,645</b> TDZE <b>2615</b> Arprt Elev <b>2704</b>
------------------------------	-------------------------	---

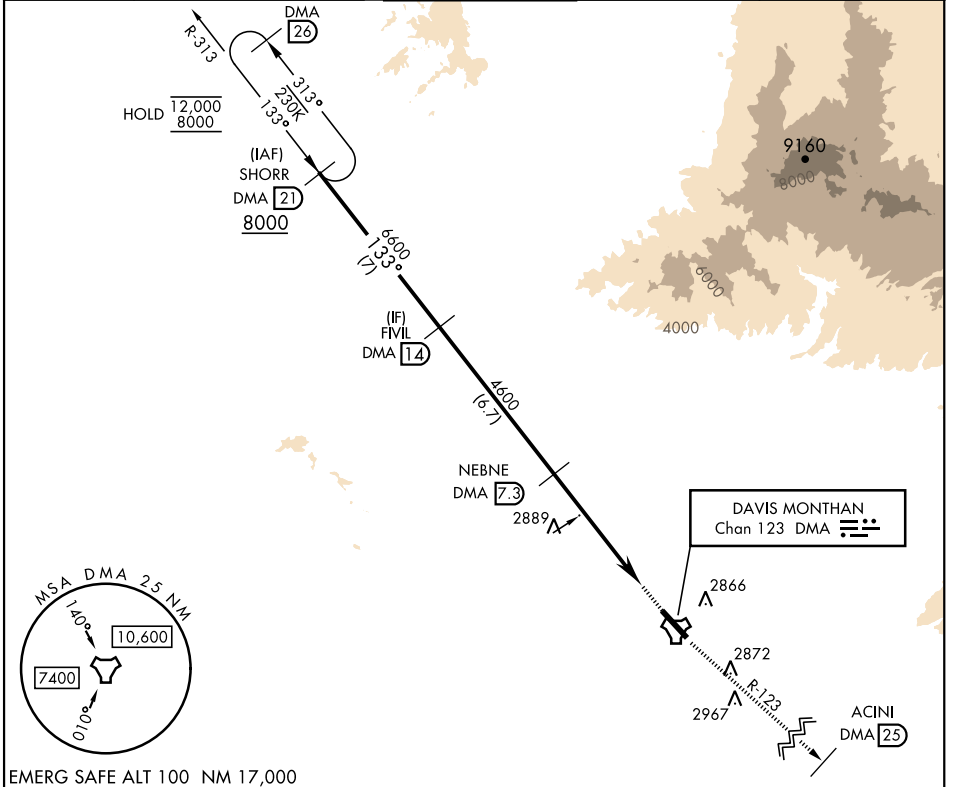
[USAF]

RNAV or RADAR required.

MISSED APPROACH: Climb to 8000 intercept DMA TACAN R-123 to ACINI. Expect RADAR vectors.

\* Circling not authorized SW of Rwy 13-31.

ATIS★ <b>132.3 270.1</b>	TUCSON APP CON 066°-274° <b>119.4 318.1</b> 275°-065° <b>125.1 269.55</b>	TOWER <b>118.85 253.5</b>	GND CON <b>121.8 275.8</b>	CLNC DEL <b>121.8 275.8</b>
-----------------------------	---	------------------------------	-------------------------------	--------------------------------



EMERG SAFE ALT 100 NM 17,000

SHORR DMA (21) 8000	FIVIL DMA (14) 6600	NEBNE DMA (7.3) 4600	ESALE DMA (2)	DMA TACAN	ELEV 2704	TDZE 2615
CATEGORY	A	B	C	D	E	
S-13	3160/55 545 (500-1)		3160-1 $\frac{1}{8}$	545	(500-1 $\frac{1}{8}$ )	
CIRCLING*	3200-1 496 (500-1)	3220-1 516 (600-1)	3280-1 $\frac{1}{8}$ 576 (600-1 $\frac{1}{8}$ )	3420-2 $\frac{1}{4}$ 716 (800-2 $\frac{1}{4}$ )	3460-2 $\frac{3}{4}$ 756 (800-2 $\frac{3}{4}$ )	HIREL Rwy 13-31 REIL Rwy 13

TUCSON, ARIZONA

32°10'N-110°53'W

DAVIS-MONTHAN AFB (KDMA)

Orig 28NOV24

# TACAN Y RWY 13

SW-4, 25 DEC 2025 to 22 JAN 2026

SW-4, 25 DEC 2025 to 22 JAN 2026