

# HI-ILS or LOC Z RWY 33L

LOC I-SPS <b>109.7</b>	APCH CRS <b>333°</b>	Rwy ldg TDZE Arprt Elev <b>13,100</b> <b>1000</b> <b>1019</b>
---------------------------	-------------------------	--

[USAF]

SHEPPARD AFB/WICHITA FALLS MUNI (KSPS)

DME required

- ▼ \* When ALS inop, increase CAT CDE vis to ¾ mile.
- \*\* When ALS inop, increase CAT CDE vis to 1 mile.
- \*\*\* Circling not authorized W of Rwy 15R-33L.

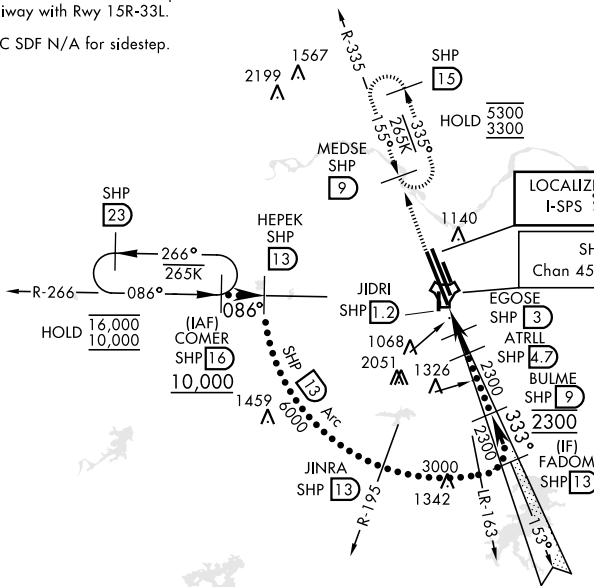
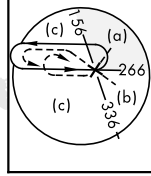


MISSED APPROACH: Climb to 3300 on SHP TACAN R-335 to MEDSE/9 DME and hold, continue climb-in-hold to 3300.

ATIS ★ <b>132.05 269.9</b>	APP CON <b>118.2 269.025</b>	TOWER ★ <b>119.75 0 279.525 (CTAF)</b>	GND CON <b>125.5 289.4</b>	ASR
-------------------------------	---------------------------------	---	-------------------------------	-----

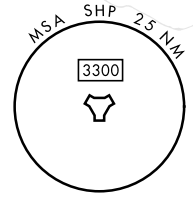
CAUTION: Do not confuse parallel taxiway with Rwy 15R-33L.

LOC SDF N/A for sidestep.



LOCALIZER 109.7  
I-SPS

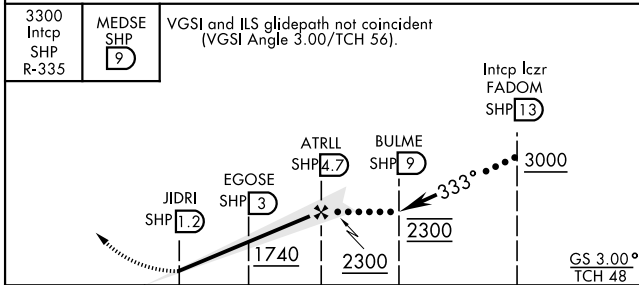
SHEPPARD  
Chan 45 SHP



SC-2, 25 DEC 2025 to 22 JAN 2026

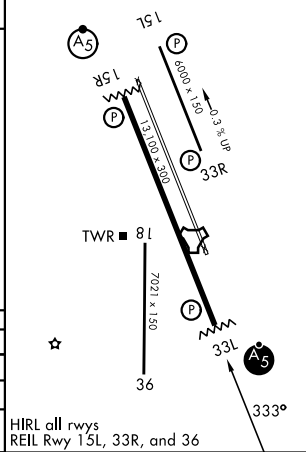
SC-2, 25 DEC 2025 to 22 JAN 2026

EMERG SAFE ALT 100 NM 4600



ELEV	1019	TDZE	1000
------	------	------	------

3300 Intcp SHP R-335	MEDSE SHP 9	VGSI and ILS glidepath not coincident (VGSI Angle 3.00/TCH 56).	
CATEGORY	C	D	E
S-ILS 33L *	1200-½	200 (200-½)	
S-LOC 33L **	1340-½	340 (400-½)	
CIRCLING ***	1480-1½ 461 (500-1½)	2100-3	1081 (1100-3)



# HI-ILS or LOC Z RWY 33L