

WICHITA FALLS, TEXAS

ILS or LOC Y RWY 33L

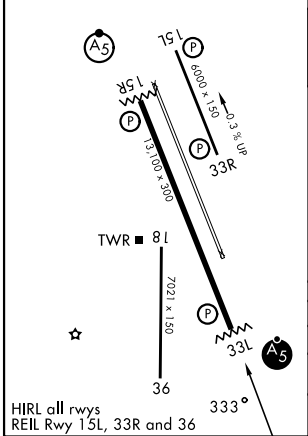
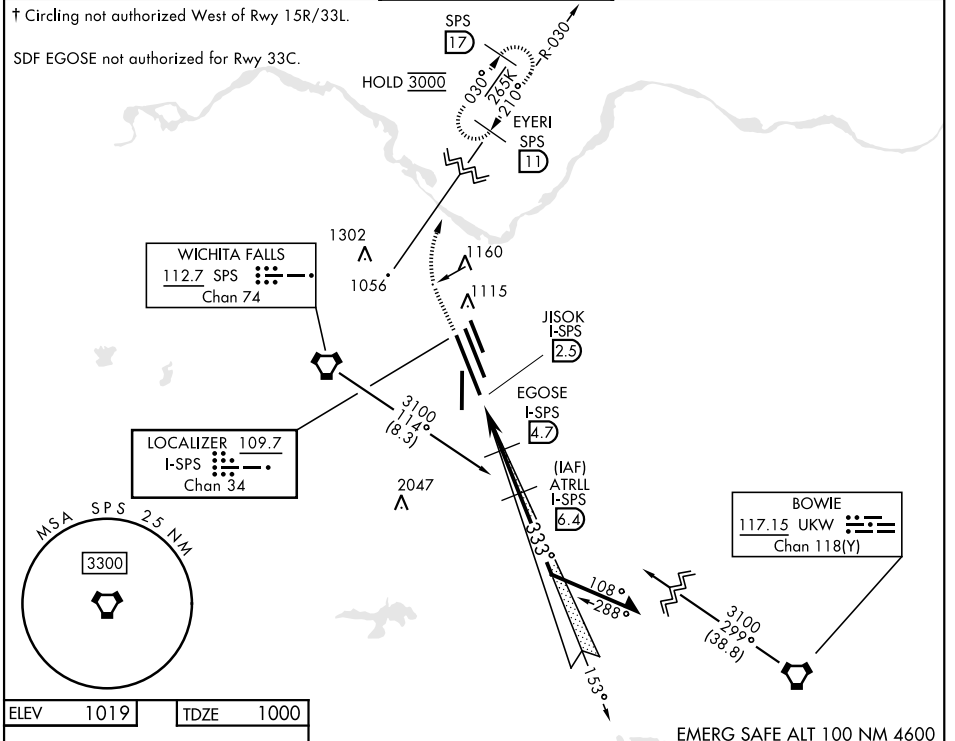
LOC/DME I-SPS 109.7 Chan 34	APCH CRS 333°	Rwy Idg 13,100 TDZE 1000 Arprt Elev 1019
---	-------------------------	---

[USAF]

SHEPPARD AFB/WICHITA FALLS MUNI (KSPS)

<p>▼ * When ALS inop, increase vis to ¾ mile. ** When ALS inop, increase vis to 1 mile. *** When ALS inop, increase CAT AB vis to 1 mile; CAT CDE vis to 1½ miles.</p>	<p>MALSR A5</p>	<p>MISSED APPROACH: Climb to 2200, then climbing right turn to 3000 via SPS VORTAC R-030 to EYERI (SPS R-030/11) and hold.</p>
--	----------------------------	--

ATIS ★ 132.05 269.9	APP CON 118.2 269.025	TOWER ★ 119.75 0 279.525 (CTAF)	GND CON 125.5 289.4	ASR
-------------------------------	---------------------------------	---	-------------------------------	-----



WICHITA FALLS, TEXAS 33° 59' N - 98° 30' W SHEPPARD AFB/WICHITA FALLS MUNI (KSPS)

ILS or LOC Y RWY 33L

SC-2, 25 DEC 2025 to 22 JAN 2026

SC-2, 25 DEC 2025 to 22 JAN 2026