

LOC I-SBD 109.3	APP CRS 057°	Rwy Ldg 10000	TDZE 1103
		Apt Elev 1159	

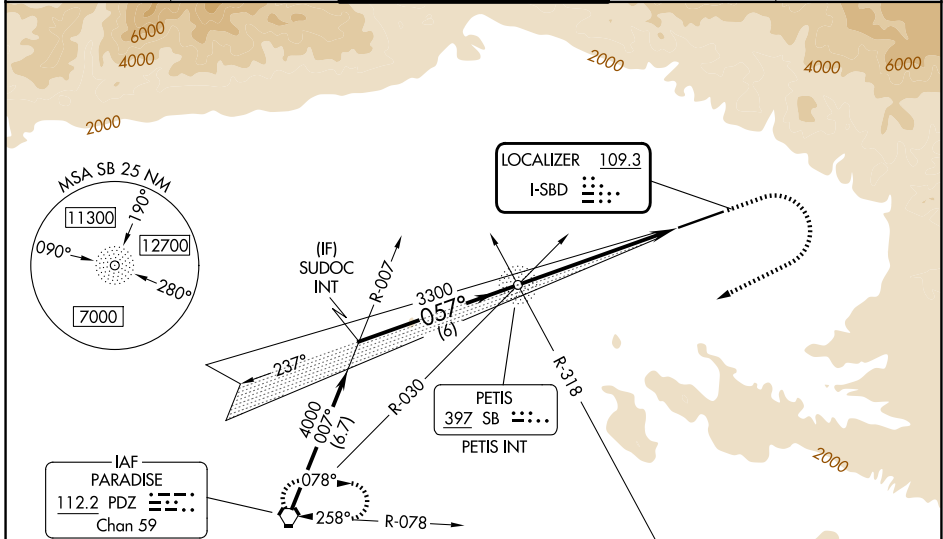
ILS or LOC Z RWY 6

SAN BERNARDINO INTL (SBD)

⚠ Circling NA northwest of Rwy 6-24. When local altimeter setting not received, use Ontario altimeter setting and increase DA to 1426 feet and all visibilities ¼ SM; increase all MDA 80 feet and S-LOC Cats C/D and Circling Cat C visibility ¼ SM.

MISSED APPROACH: Climb to 2000 then climbing right turn to 6000 direct PDZ VORTAC and hold, continue climb-in-hold to 6000.
 * Missed approach requires minimum climb of 340 feet per NM to 4000; if unable to meet climb gradient, see LOC Y RWY 6.

D-ATIS 124.175	SOCAL APP CON 127.0 318.2	SAN BERNARDINO TOWER * 119.45 (CTAF) 0	GND CON 121.8	UNICOM 122.975
--------------------------	-------------------------------------	--	-------------------------	--------------------------



Procedure NA for arrival on PDZ VORTAC
 airway radials 012 CW 030.

ELEV 1159	D	TDZE 1103
-----------	----------	-----------

HIRL Rwy 6-24 **1**
REIL RWYS 6 and 24 **1**

FAF to MAP 6.1 NM

Knots	60	90	120	150	180
Min:Sec	6:06	4:04	3:03	2:26	2:02

Diagram showing TWR, 0.7% UP, 0.8% DOWN, 10000 X 200, and 057°.

SUDOC INT	SB NDB PETIS INT		2000	6000	PDZ
	4000	3118	↑	↷	⬡
GS 3.00°	057°	3300	6 NM	6.1 NM	
TCH 51					
CATEGORY	A	B	C	D	
S-ILS 6*		1353-¾	250 (200-¾)		
S-LOC 6*	1740-1	637 (600-1)	1740-1¾	637 (600-1¾)	
CIRCLING	1740-1	581 (600-1)	1760-1¾	2640-3	1481 (1500-3)

SW-3, 25 DEC 2025 to 22 JAN 2026

SW-3, 25 DEC 2025 to 22 JAN 2026