

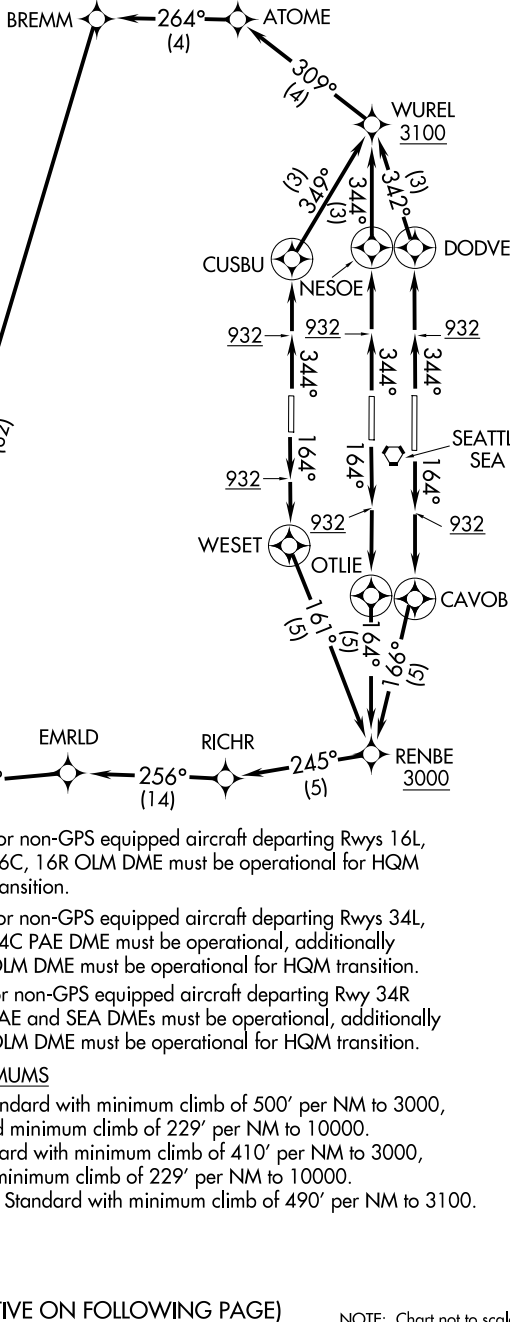
HAROB SIX DEPARTURE (RNAV)

AL-582 (FAA)

D-ATIS
118.0
CLNC DEL
128.0
CPDLC
SEATTLE DEP CON
120.4 395.0

**TOP ALTITUDE:
ASSIGNED BY ATC**

- NOTE: RNAV 1.
- NOTE: RADAR required.
- NOTE: DME/DME/IRU or GPS required.



(NARRATIVE ON FOLLOWING PAGE)

NOTE: Chart not to scale.

NW-1, 25 DEC 2025 to 22 JAN 2026

NW-1, 25 DEC 2025 to 22 JAN 2026

HAROB SIX DEPARTURE (RNAV)