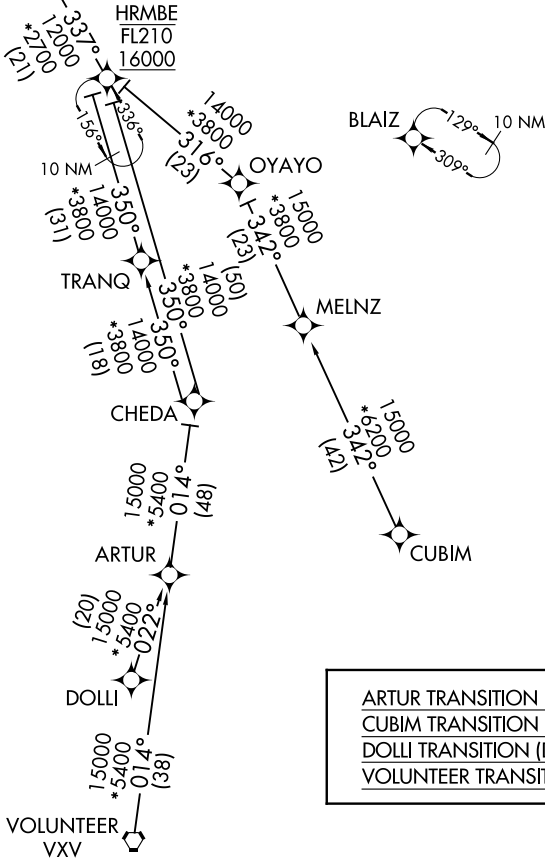
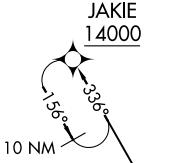


CINCINNATI APP CON
119.7 254.25
D-ATIS
134.375

RNAV 1 - DME/DME/IRU or GPS.

RADAR required.

See following page for arrival routes.



ARTUR TRANSITION (ARTUR.JAKIE6):
 CUBIM TRANSITION (CUBIM.JAKIE6):
 DOLLI TRANSITION (DOLLI.JAKIE6):
 VOLUNTEER TRANSITION (VXX.JAKIE6):

NOTE: Chart not to scale.

(CONTINUED ON FOLLOWING PAGE)

SE-1, 25 DEC 2025 to 22 JAN 2026

SE-1, 25 DEC 2025 to 22 JAN 2026