

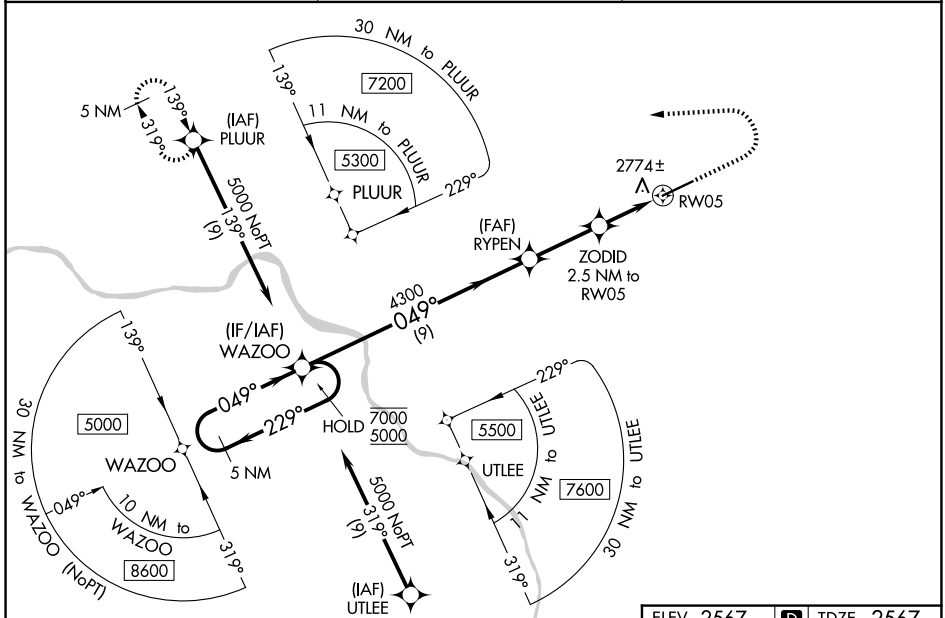
WAAS CH <b>40243</b> W05B	APP CRS <b>049°</b>	Rwy Ldg TDZE Apt Elev	<b>7100</b> <b>2567</b> <b>2567</b>
---------------------------------	------------------------	-----------------------------	-------------------------------------------

# RNAV (GPS) RWY 5

PULLMAN/MOSCOW RGNL (PUW)

RNP APCH.	MALSR 	MISSED APPROACH: Climb to 3460 then climbing left turn to 5400 direct PLUUR and hold. # Missed approach requires minimum climb of 250 feet per NM to 4800.
<p>▼ For uncompensated Baro-VNAV systems, LNAV/VNAV NA below -20° C or above 54° C. For inop ALS, increase LPV all Cats visibility to RVR 4500 and LNAV Cat C/D visibility to 1 3/8 SM.                  ▲ RVR 1800 authorized with use of FD or AP or HUD to DA.</p>		

ASOS <b>135.675</b>	SEATTLE CENTER <b>123.95 290.55</b>	UNICOM <b>122.8 (CTAF) 0</b>
------------------------	----------------------------------------	---------------------------------



NW-1, 25 DEC 2025 to 22 JAN 2026

NW-1, 25 DEC 2025 to 22 JAN 2026



5 NM Holding Pattern	WAZOO	RYPEN	ZODID 2.5 NM to RW05	PLUUR
7000 ← 229°	5000 → 049°	4300	* 1.5 NM to RW05	
GP 3.00°			* 3420	
TCH 50				
	9 NM	2.8 NM	1 NM	1.5 NM

ELEV 2567	D	TDZE 2567
REIL Rwy 23 0 HIRL Rwy 5-23 1		

CATEGORY	A	B	C	D
LPV DA#†		2767/24	200 (200-1/2)	
LPV DA		2846/24	279 (300-1/2)	
LNAV/VNAV DA		3005/40	438 (500-3/4)	
LNAV MDA	3080/24	513 (600-1/2)	3080/55	513 (600-1)
CIRCLING	3080-1 513 (600-1)	3120-1 553 (600-1)	3140-1 1/2 573 (600-1 1/2)	3420-2 3/4 853 (900-2 3/4)