

COPTER TACAN RWY 32

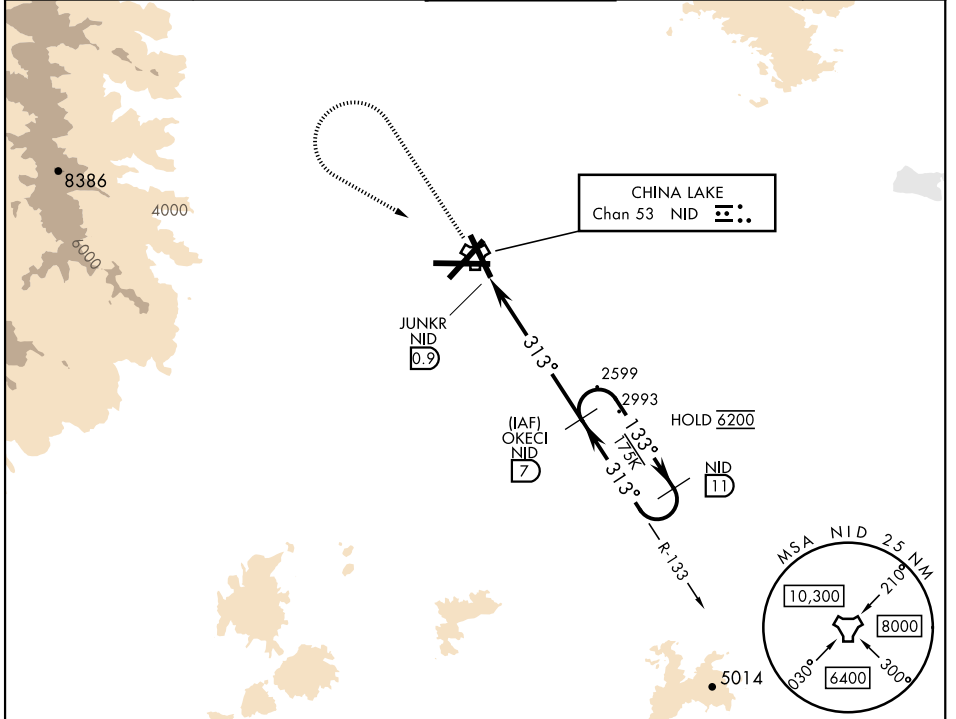
TACAN NID Chan 53	APCH CRS 313°	Rwy ldg THRE 2241	Arpt Elev 2288
-----------------------------	-------------------------	--------------------------------	--------------------------

[USN] CHINA LAKE NAWA (ARMITAGE FLD) (KNID)

RADAR required
 ▼ Limit final approach airspeed to 80 KIAS.

MISSED APPROACH: Climb to 3600, then climbing left turn to 6200, intercept NID TACAN R-133 to OKECI and hold. Continue climb in hold.

ATIS ★ 322.375	JOSHUA APP CON/DEP CON 133.65 348.7	TOWER ★ 120.15 340.2	GND CON 350.3	CLNC DEL 254.25
--------------------------	---	--------------------------------	-------------------------	---------------------------

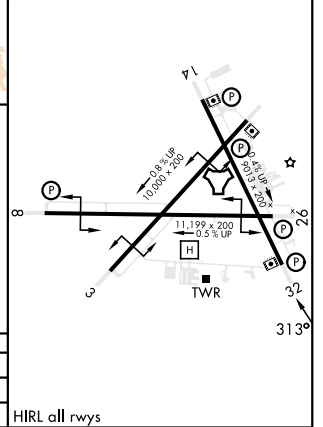
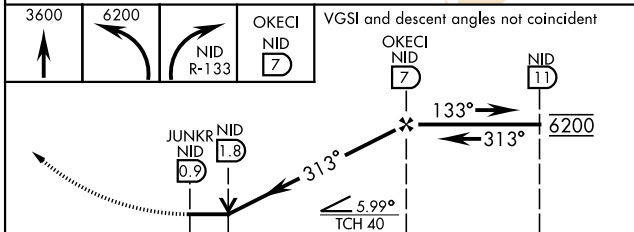


SW-3, 25 DEC 2025 to 22 JAN 2026

SW-3, 25 DEC 2025 to 22 JAN 2026

ELEV	2288	THRE	2241
------	------	------	------

EMERG SAFE ALT 100 NM 16,500



CATEGORY	COPTER		
S-32	2860-1	619	(600-1)
CIRCLING	2860-1	576	(600-1)

HIRL all rwys

COPTER TACAN RWY 32