

LOC/DME F-ADQ 110.9 Chan 46	APP CRS 258°	Rwy Ldg 7534 TDZE 32 Apt Elev 79
---	------------------------	---

ILS Y or LOC Y RWY 26

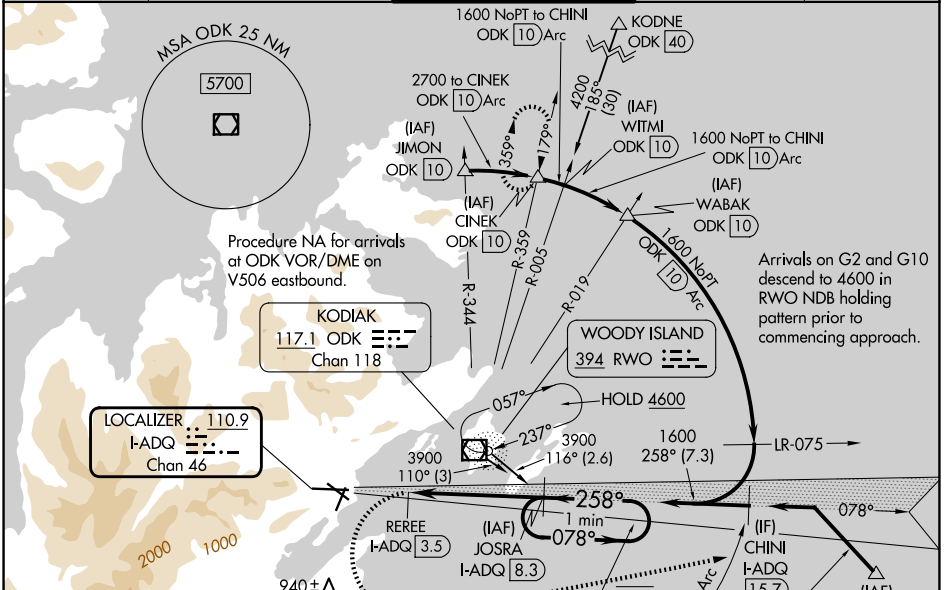
KODIAK (ADQ)(PADQ)

DME required.

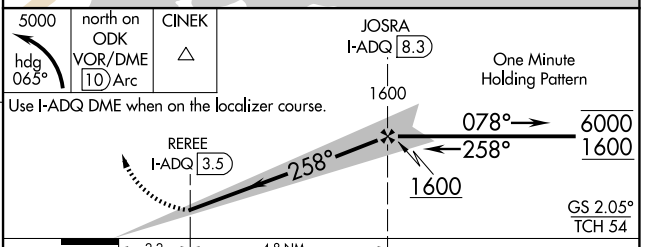
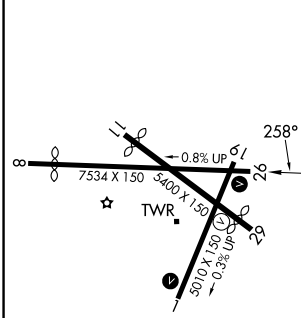
▼ Circling NA north of Rwy 8-26 and west of Rwy 1-19. Circling Rwy 1 NA at night.
▲ Circling NA to Rws 8, 11 and 19. Rapidly rising terrain north, west, and south of airport. ILS unusable from 2 DME inbound. When advised by ATC of tall ships in the harbor, procedure NA.

MISSED APPROACH: Climbing left turn to 5000 on heading 065° to intercept ODK VOR/DME 10 DME Arc. Arc north to CINEK/ODK 10 DME and hold

ATIS 134.45	ANCHORAGE CENTER 125.1 281.4	KODIAK TOWER* 119.8 (CTAF) 239.0	GND CON 121.9	UNICOM 122.8
-----------------------	--	--	-------------------------	------------------------



ELEV 79	D	TDZE 32
---------	----------	---------



CATEGORY	A	B	C	D
S-ILS 26	636-3	604 (600-3)		824-3 792 (800-3)
S-LOC 26	640-2½	608 (600-2½)		1060-3 1028 (1000-3)
CIRCLING	660-2½ 581 (600-2½)	720-2½ 641 (700-2½)	1140-3 1061 (1100-3)	NA

REIL Rws 1 and 26
 HIRL Rws 1-19, 8-26, and 11-29

57°45'N-152°30'W

KODIAK (ADQ)(PADQ)

ILS Y or LOC Y RWY 26

AK, 27 NOV 2025 to 22 JAN 2026

AK, 27 NOV 2025 to 22 JAN 2026