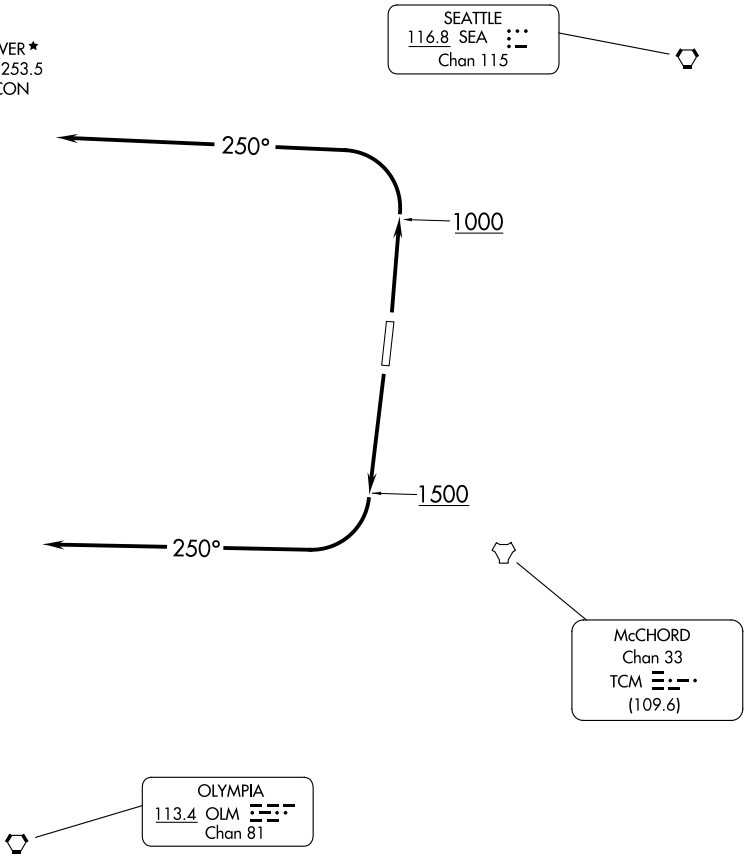


ATIS  
124.05  
GND CON  
121.8  
TACOMA TOWER ★  
118.5 (CTAF) 253.5  
SEATTLE DEP CON  
120.1 290.9



NOTE: Chart not to scale.



DEPARTURE ROUTE DESCRIPTION

**TAKEOFF RUNWAY 17:** Climb runway heading until leaving 1500, turn right heading 250°, maintain 2000. Expect filed altitude 5 minutes after departure. Expect RADAR vectors to assigned route

**TAKEOFF RUNWAY 35:** Climb runway heading until leaving 1000, turn left heading 250°, maintain 2000. Expect filed altitude 5 minutes after departure. Expect RADAR vectors to assigned route.

**LOST COMMUNICATIONS:** If no transmissions are received for 3 minutes after departure, climb to filed altitude direct SEA VORTAC, thence via assigned route.