

## UECKR SIX DEPARTURE (RNAV)

KENOSHA RGNL (ENW)  
KENOSHA, WISCONSIN

**TOP ALTITUDE:  
ASSIGNED BY ATC**

Rwys 7L/R, 15, 25L/R, 33: Standard.

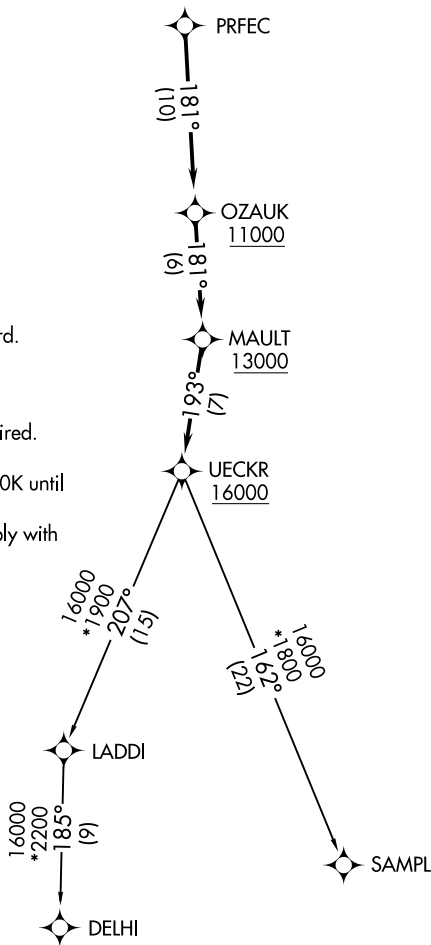
NOTE: RNAV 1.

NOTE: GPS or DME/DME/IRU required.

NOTE: RADAR required.

NOTE: Turbojet aircraft maintain 250K until advised by ATC.

NOTE: Notify ATC if unable to comply with crossing restrictions.



NOTE: Chart not to scale.

## DEPARTURE ROUTE DESCRIPTION

Climb on assigned heading for RADAR vectors to PRFEC, thence....

...on track 181° to cross OZAUZ at or above 11000, then on track 181° to cross MAULT at or above 13000, then on track 193° to cross UECKR at or above 16000, then on (transition). Maintain ATC assigned altitude, expect filed altitude ten minutes after departure.

DELHI TRANSITION (UECKR6.DELHI)

### SAMPL TRANSITION (UECKR6.SAMPL)

## UECKR SIX DEPARTURE (RNAV)

(UECKR6.UECKR) 26MAR20

KENOSHA, WISCONSIN  
KENOSHA RGNL (ENW)

EC-3, 25 DEC 2025 to 22 JAN 2026