

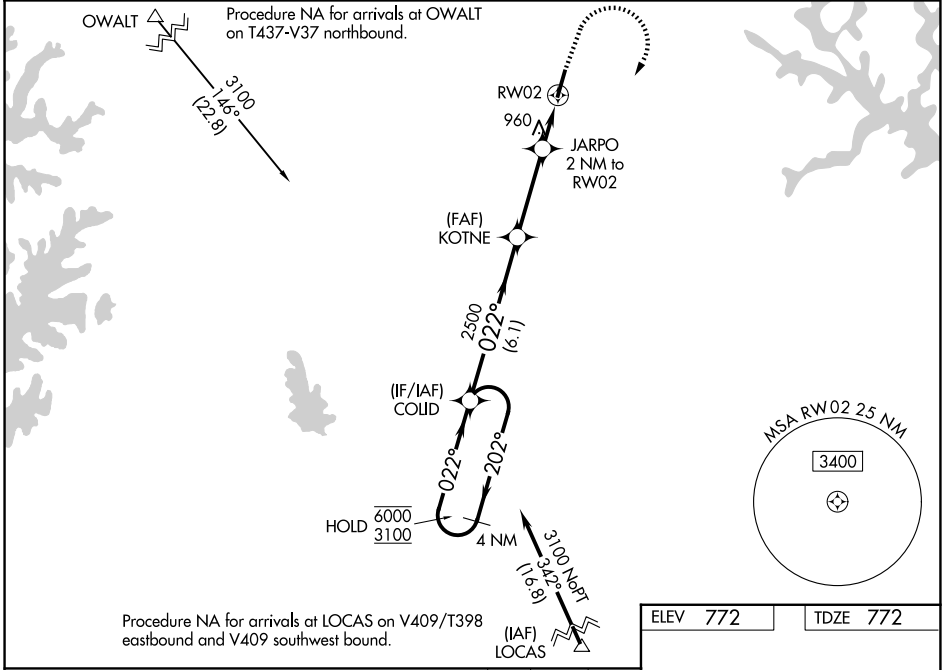
WAAS CH 40321 W02A	APP CRS 022°	Rwy Ldg TDZE Apt Elev	5375 772 772
--	------------------------	-----------------------------	---

RNAV (GPS) RWY 2

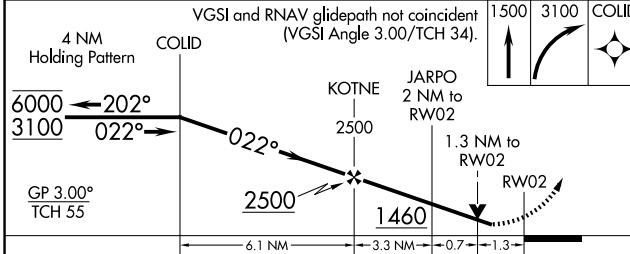
MID-CAROLINA RGNL (RUQ)

RNP APCH - GPS.	MISSED APPROACH: Climb to 1500 then climbing right turn to 3100 direct COLID and hold.
<p>Rwy 2 helicopter visibility reduction below 3/4 SM NA. For uncompensated Baro-VNAV systems, LNAV/VNAV NA below -16°C or above 54°C.</p>	

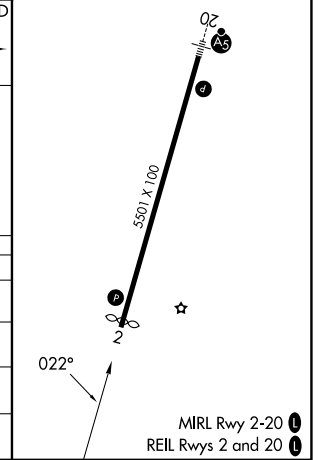
AWOS-3 118.175	CHARLOTTE APP CON 128.325 307.8	UNICOM 122.725 (CTAF)
--------------------------	---	---------------------------------



ELEV 772	TDZE 772
----------	----------



CATEGORY	A	B	C	D
LPV DA	1138-1 366 (400-1)			
LNAV/VNAV DA	1181-1 1/8 409 (500-1 1/8)			
LNAV MDA	1220-1	448 (500-1)	1220-1 3/8	448 (500-1 3/8)
CIRCLING	1240-1 468 (500-1)	1260-1 488 (500-1)	1440-1 3/4 668 (700-1 3/4)	1440-2 668 (700-2)



SE-2, 25 DEC 2025 to 22 JAN 2026

SE-2, 25 DEC 2025 to 22 JAN 2026