

BAYTOWN (HPY)  
BAYTOWN, TEXAS

## BLTWY SEVEN DEPARTURE (RNAV)

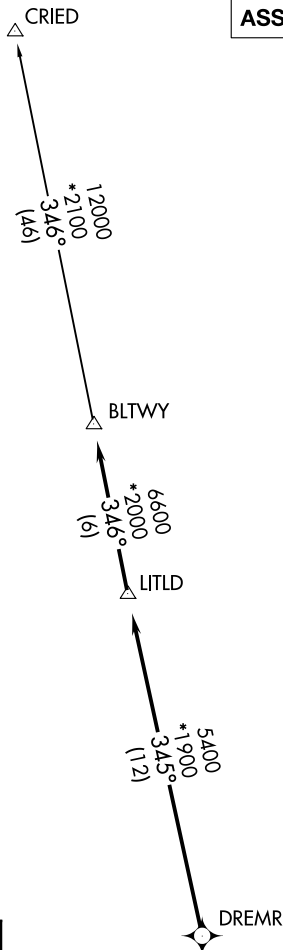
CTAF  
122.8  
HOUSTON DEP CON  
134.45 284.0

**TOP ALTITUDE:  
ASSIGNED BY ATC**

NOTE: RADAR required.  
NOTE: DME/DME/IRU or GPS required.  
NOTE: RNAV 1.

## TAKEOFF MINIMUMS

Rwy 14, 32: Standard with minimum climb  
of 500' per NM to 540.



## DEPARTURE ROUTE DESCRIPTION

TAKEOFF RUNWAY 14: Climb on heading 140°

to 540 for RADAR vectors to DREMR, thence . . . .

TAKEOFF RUNWAY 32: Climb on heading 320°

...on track 345° to LITLD, then on track 346° to BLTWY, then on (transition). Maintain ATC assigned altitude. Expect filed altitude 10 minutes after departure.

CRIED TRANSITION (BLTWY7.CRIED)

NOTE: Chart not to scale.

## BLTWY SEVEN DEPARTURE (RNAV)

(BLTWY7.BLTWY) 07OCT21

BAYTOWN, TEXAS  
BAYTOWN (HPY)

SC-5, 25 DEC 2025 to 22 JAN 2026