

WAAS CH 97342 W18A	APP CRS 175°	Rwy Idg TDZE Apt Elev	4986 916 925
--	------------------------	-----------------------------	---

RNAV (GPS) RWY 18

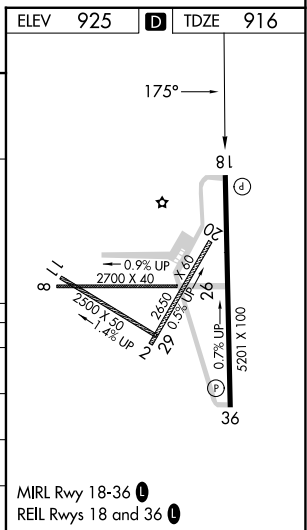
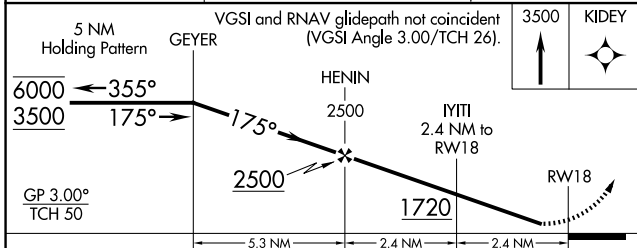
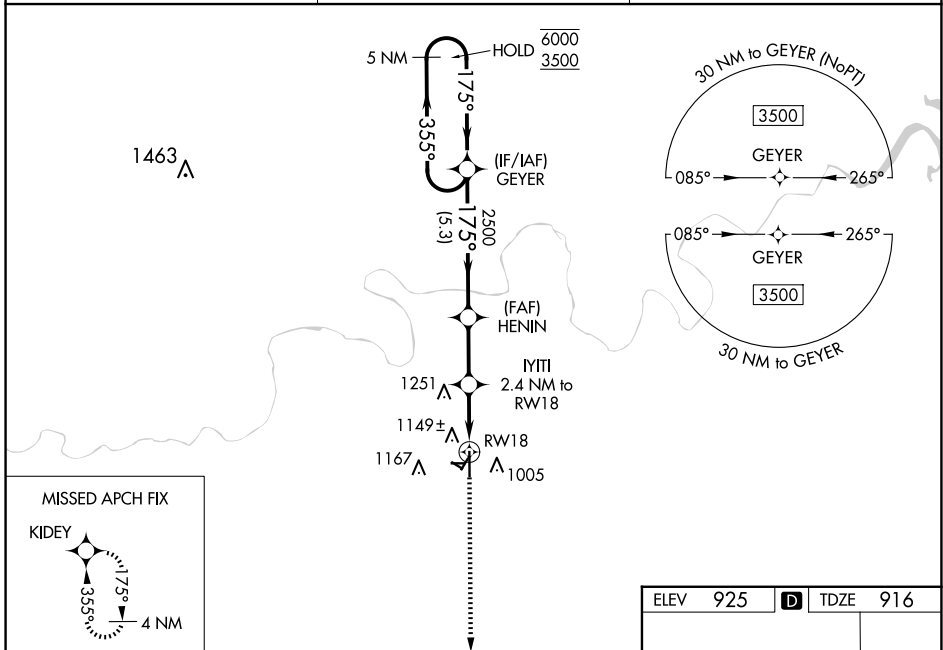
CUSHING MUNI (CUH)

RNP APCH-GPS.

⚠ Rwy 18 helicopter visibility reduction below $\frac{3}{4}$ SM NA. For uncompensated Baro-VNAV systems, LNAV/VNAV NA below -16°C or above 54°C . Baro-VNAV and VDP NA when using CQB altimeter setting. When local altimeter setting not received, use CQB altimeter setting and increase LPV DA to 1207 feet and all visibilities $\frac{1}{8}$ SM. Increase LNAV/VNAV DA to 1398 feet; increase all MDAs 60 feet and LNAV visibility Cat C/D $\frac{1}{4}$ SM. Circling NA to Rwy 2, 8, 11, 20, 26, 29.

MISSED APPROACH: Climb to 3500 direct KIDEY and hold.

AWOS-3PT 118.25	KANSAS CITY CENTER 127.8 319.1	UNICOM 122.8 (CTAF) ①
---------------------------	--	--



CATEGORY	A	B	C	D
LPV DA		1166- $\frac{3}{4}$	250 (300- $\frac{3}{4}$)	
LNAV/VNAV DA		1357-1 $\frac{1}{2}$	441 (500-1 $\frac{1}{2}$)	
LNAV MDA	1400-1	484 (500-1)	1400-1 $\frac{3}{8}$	484 (500-1 $\frac{3}{8}$)
C CIRCLING	1600-1	675 (700-1)	1600-2	1600-2 $\frac{1}{4}$
			675 (700-2)	675 (700-2 $\frac{1}{4}$)

SC-1, 25 DEC 2025 to 22 JAN 2026

SC-1, 25 DEC 2025 to 22 JAN 2026