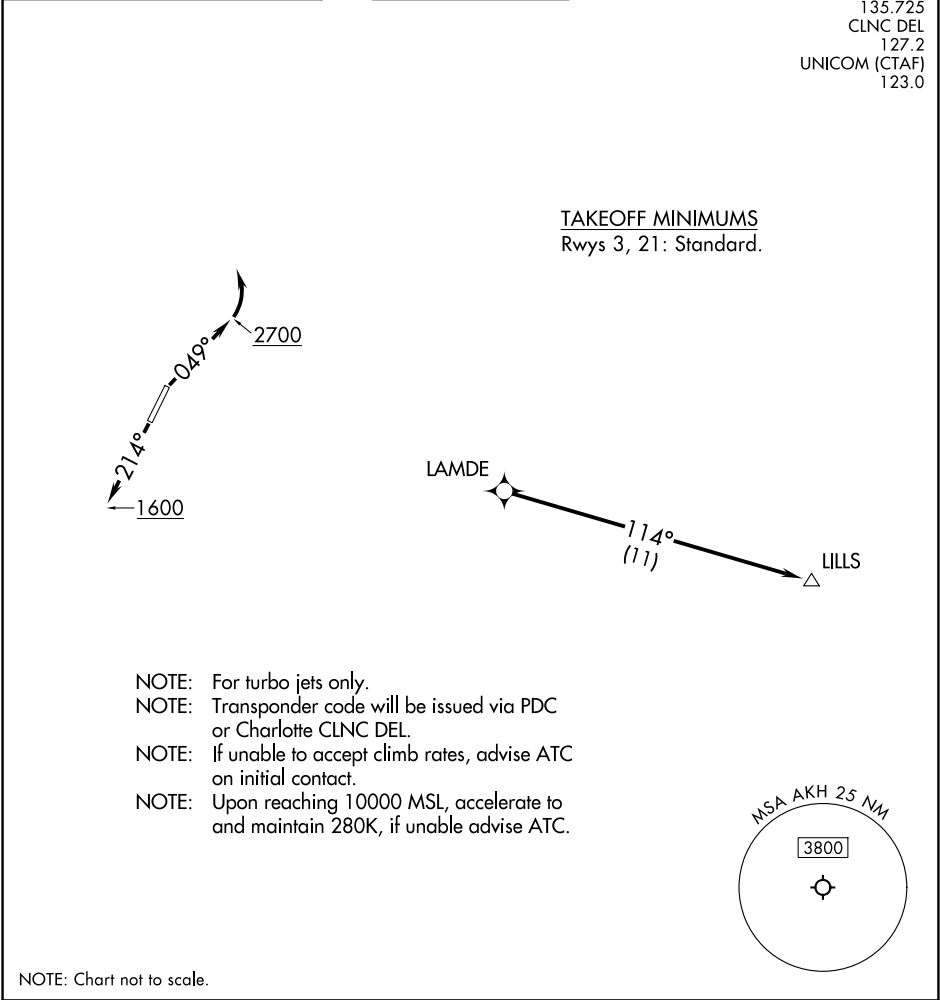


RNAV 1 - DME/DME/IRU or GPS.	TOP ALTITUDE: 3000	CHARLOTTE DEP CON 120.05 257.2 ASOS 135.725 CLNC DEL 127.2 UNICOM (CTAF) 123.0
RADAR required.		



<div>T</div> <div>DEPARTURE ROUTE DESCRIPTION</div> <div>TAKEOFF RUNWAY 3: Climb on heading 049° to 2700 before turning left, then on heading assigned by ATC, thence. . . . TAKEOFF RUNWAY 21: Climb on heading 214° to 1600 before proceeding north, then on heading assigned by ATC, thence. . . .  . . . on RADAR vectors to LAMDE, then on depicted route to LILLS. Maintain 3000. Expect clearance to filed altitude within 10 minutes after departure.</div>
---