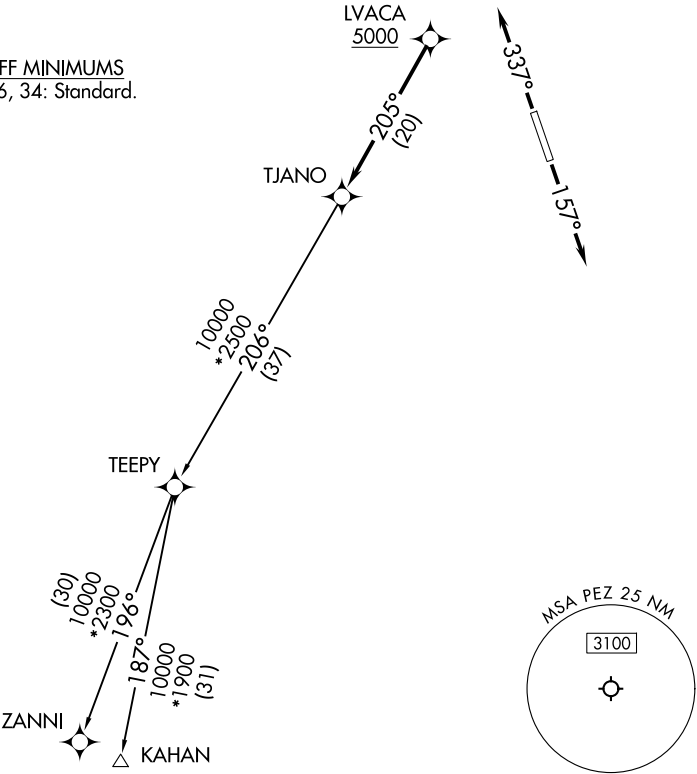


| | | |
|---|--|----------------------------------|
| SAN ANTONIO DEP CON 125.7 290.225 CLNC DEL 121.375 | RNAV 1 - DME/DME IRU or GPS. | TOP ALTITUDE: ASSIGNED BY ATC |
| | RADAR required for non-GPS equipped aircraft. RADAR required. | |

TAKEOFF MINIMUMS
Rwys 16, 34: Standard.



NOTE: Chart not to scale.



DEPARTURE ROUTE DESCRIPTION

TAKEOFF RUNWAY 16: Climb on heading 157° or as assigned by ATC, for vectors to LVACA, thence. . .
TAKEOFF RUNWAY 34: Climb on heading 337° or as assigned by ATC, for vectors to LVACA, thence. . .

. . .on track 205° to TJANO, then on transition. Maintain ATC assigned altitude.
Expect filed altitude 10 minutes after departure.

KAHAN TRANSITION (TJANO2.KAHAN)
ZANNI TRANSITION (TJANO2.ZANNI)