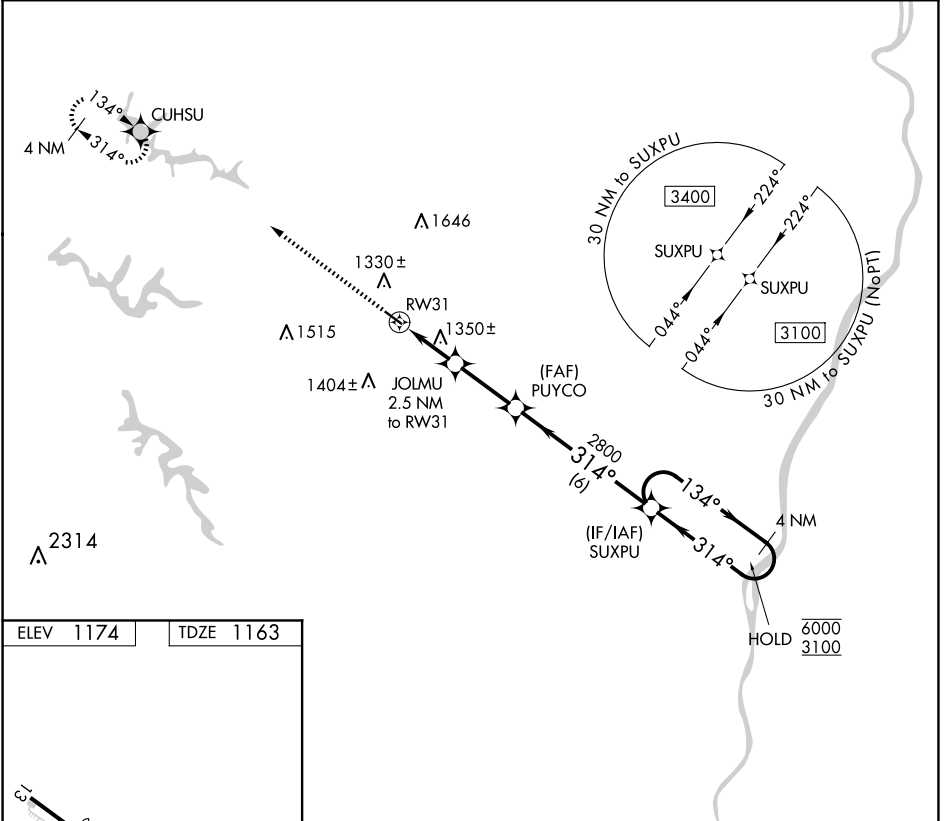


APP CRS	Rwy Idg	3744
314°	TDZE	1163
	Apt Elev	1174

RNAV (GPS) RWY 31

HARRISON COUNTY (8G6)

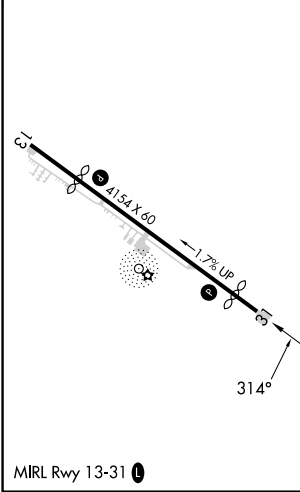
RNP APCH.		MISSED APPROACH: Climb to 3000 direct CUHSU and hold.
<p>▽ Rwy 31 helicopter visibility reduction below 1 SM NA. Use Wheeling altimeter setting; when not received, use Washington altimeter setting and increase all MDA 40 feet. Procedure NA at night.</p> <p>△ NA</p>		
HLG ASOS 127.375	CLEVELAND CENTER 126.95 239.30	UNICOM 122.8 (CTAF) 0



EC-2, 25 DEC 2025 to 22 JAN 2026

EC-2, 25 DEC 2025 to 22 JAN 2026

ELEV 1174	TDZE 1163
-----------	-----------



3000	CUHSU	Visual Segment - Obstacles.	4 NM Holding Pattern	
		<p>JOLMU 2.5 NM to RW31</p> <p>PUYCO</p> <p>SUXPU</p> <p>134° → 6000</p> <p>← 314° 3100</p>		
CATEGORY	A	B	C	D
LNNAV MDA	1660-1	497 (500-1)		NA