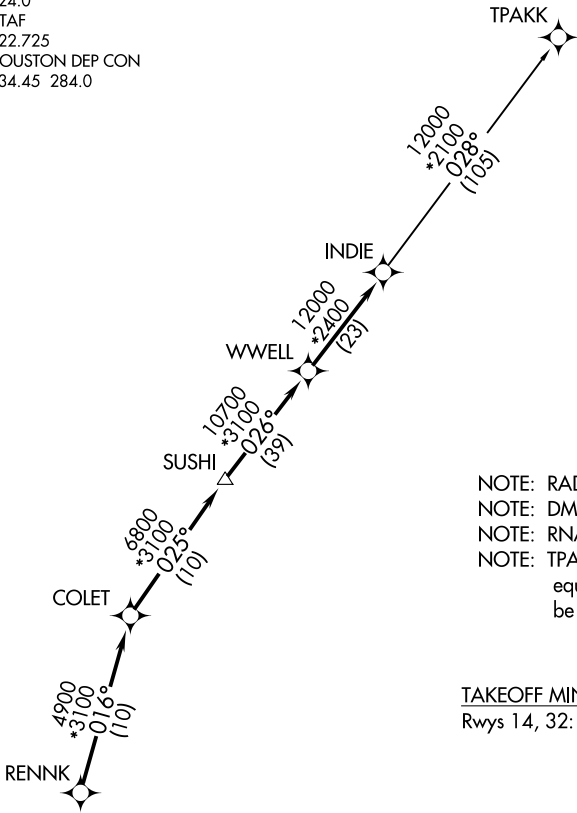


ASOS  
118.525  
CLNC DEL  
124.0  
CTAF  
122.725  
HOUSTON DEP CON  
134.45 284.0

TOP ALTITUDE:  
ASSIGNED BY ATC



NOTE: RADAR required.  
NOTE: DME/DME/IRU or GPS required.  
NOTE: RNAV 1.  
NOTE: TPAKK TRANSITION: For non GPS equipped aircraft TNV DME must be operational.

TAKEOFF MINIMUMS  
Rwys 14, 32: Standard with minimum climb of 500' per NM to 560.

DEPARTURE ROUTE DESCRIPTION

TAKEOFF RUNWAY 14: Climb on heading 142° to 1600 for RADAR vectors to RENNK, thence . . .  
TAKEOFF RUNWAY 32: Climb on heading 322° to 700 for RADAR vectors to RENNK, thence . . .

. . . on track 016° to COLET, then on track 025° to SUSHI, then on track 026° to WWELL, then on track 026° to INDIE, then on (transition).  
Maintain ATC assigned altitude. Expect filed altitude 10 minutes after departure.

TPAKK TRANSITION (INDIE8.TPAKK)

NOTE: Chart not to scale.