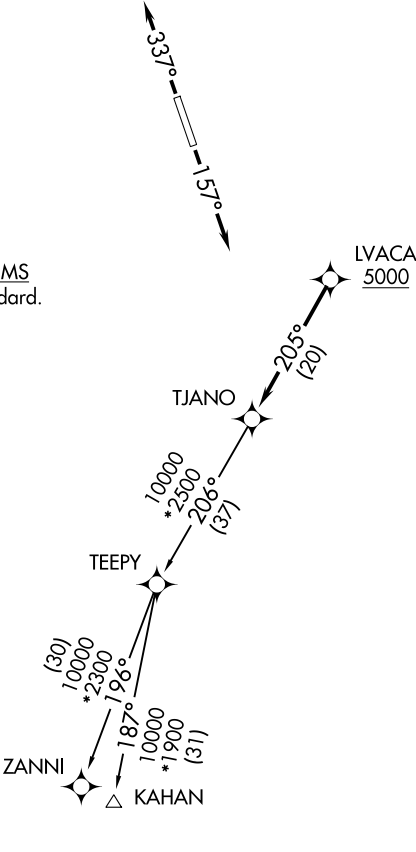


|                                     |  |                                  |
|-------------------------------------|--|----------------------------------|
| SAN ANTONIO DEP CON<br>118.05 353.5 | RNAV 1 - DME/DME IRU or GPS.                                     | TOP ALTITUDE:<br>ASSIGNED BY ATC |
|                                     | RADAR required for non-GPS equipped aircraft.<br>RADAR required. |                                  |

TAKEOFF MINIMUMS  
Rwys 16, 34: Standard.



NOTE: Chart not to scale.

DEPARTURE ROUTE DESCRIPTION

TAKEOFF RUNWAY 16: Climb on heading 157° or as assigned by ATC, for vectors to LVACA, thence. . .  
TAKEOFF RUNWAY 34: Climb on heading 337° or as assigned by ATC, for vectors to LVACA, thence. . .

. . .on track 205° to TJANO, then on transition. Maintain ATC assigned altitude.  
Expect filed altitude 10 minutes after departure.

KAHAN TRANSITION (TJANO2.KAHAN)  
ZANNI TRANSITION (TJANO2.ZANNI)