

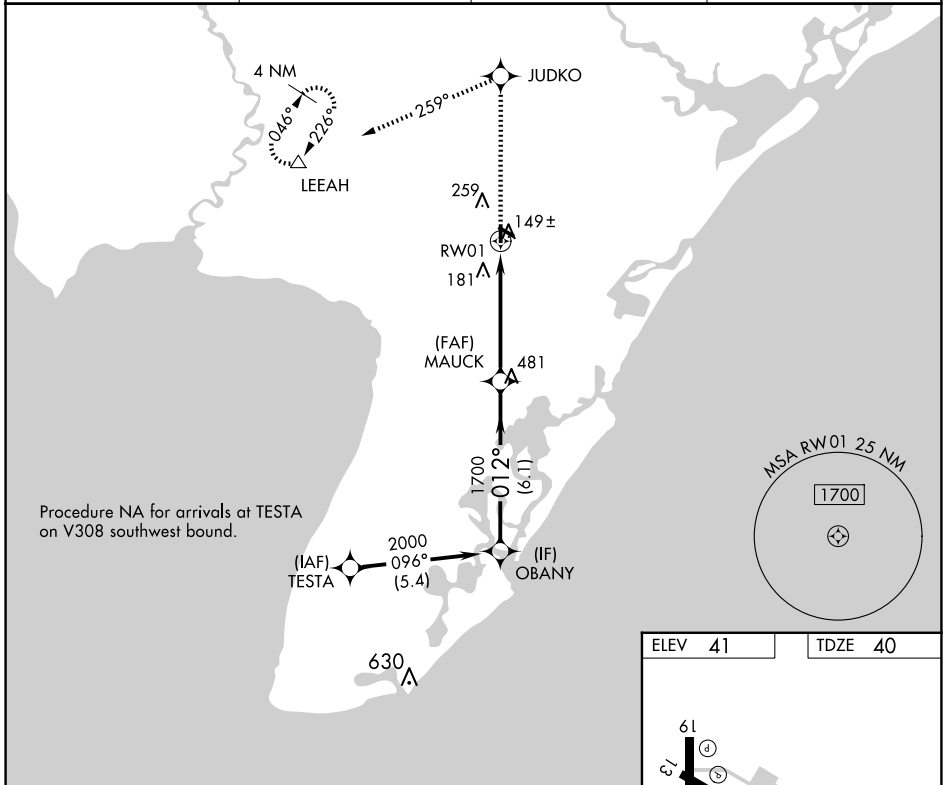
APP CRS	Rwy Idg	3304
012°	TDZE	40
	Apt Elev	41

RNAV (GPS) RWY 1

WOODBINE MUNI (OBI)

RNP APCH.	<p>▼ NA</p> <p>When local altimeter setting not received, use Millville Muni altimeter setting and increase all MDA 60 feet, and increase LNAV and Circling Cat C visibility ¼ mile. VDP NA when using Millville Muni altimeter setting. Circling Rwy 13, 19, 31 NA at night. Rwy 1 helicopter visibility reduction below ¾ SM NA.</p>	<p>MISSED APPROACH: Climb to 2000 direct JUDKO and on track 259° to LEEAH and hold.</p>
-----------	---	---

AWOS-3	ATLANTIC CITY APP CON	GCO	UNICOM
120.475	124.6 327.125	121.725	123.05 (CTAF) 0



NE-2, 25 DEC 2025 to 22 JAN 2026

NE-2, 25 DEC 2025 to 22 JAN 2026

	OBANY	MAUCK	JUDKO	LEEAH
	2000	1700	259°	△
Procedure Turn NA	<p>2000 → 1700 (012°)</p> <p>1700 → RWY 01 (012°)</p> <p>3.05° TCH 40</p> <p>1.2 NM to RWY 01</p>			
	6.1 NM	3.9 NM	1.2 NM	
CATEGORY	A	B	C	D
LNAV MDA	440-1	400 (400-1)	440-1½ 400 (400-1½)	NA
CIRCLING	620-1	579 (600-1)	620-1½ 579 (600-1½)	NA

