

WAAS CH 90117 W25A	APP CRS 254°	Rwy Ldg 7281 TDZE 1475 Apt Elev 1478
-------------------------------------	---------------------	---

RNAV (GPS) RWY 25L

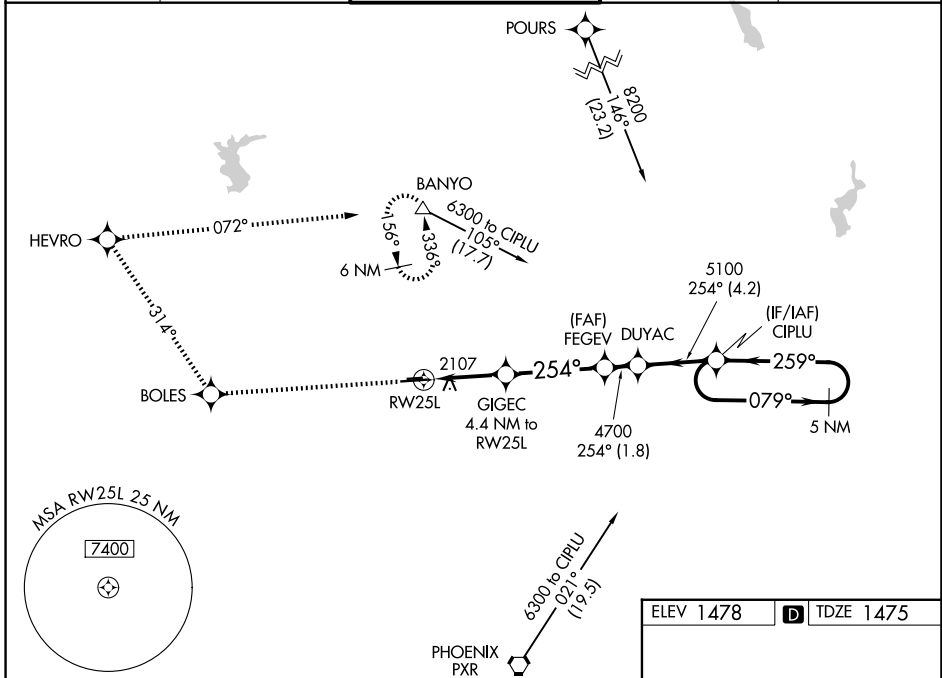
PHOENIX DEER VALLEY (DVT)

RNP APCH - GPS

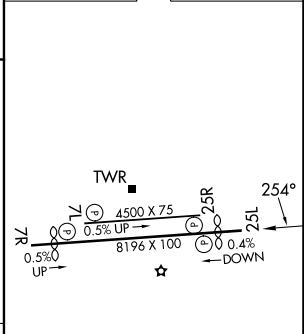
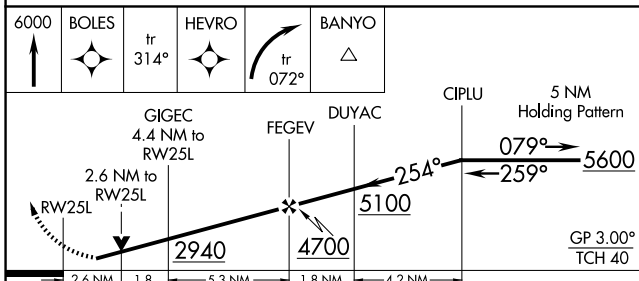
⚠ When VGSI inop, Circling to Rwy 25R NA at night. Circling NA north of Rwy 7R-25L at night. When local altimeter setting not received, use Scottsdale altimeter setting; increase LPV all Cats DA to 1877 feet and LPV all Cats visibility 1/8 SM. Increase all MDA 40 feet and Circling Cats B visibility 1/4 SM. Rwy 25L helicopter visibility reduction below 3/4 SM NA. VDP NA when using Scottsdale altimeter setting.

MISSED APPROACH: Climb to 6000 direct BOLES and on track 314° to HEVRO and right turn on track 072° to BANYO and hold.

ATIS 126.5	PHOENIX APP CON 120.7 239.0	DEER VALLEY TOWER* 118.4 (070°-250°) (CTAF) 120.2 (251°-069°)	GND CON 121.8	UNICOM 122.95
-------------------	------------------------------------	--	----------------------	----------------------



ELEV 1478	D TDZE 1475
-----------	--------------------



CATEGORY	A	B	C	D
LPV DA	1850-1 1/4 375 (400-1 1/4)			
RNAV MDA	2360-1 1/4 885 (900-1 1/4)	2360-2 3/4 885 (900-2 3/4)	2360-3 885 (900-3)	2360-3 885 (900-3)
CIRCLING	2400-1 1/4 922 (1000-1 1/4)	2420-1 1/4 942 (1000-1 1/4)	2580-3 1102 (1200-3)	2700-3 1222 (1300-3)

MIRL Rwy 7L-25R and 7R-25L
REIL Rwy 7L, 7R, 25L, and 25R

SW-4, 25 DEC 2025 to 22 JAN 2026

SW-4, 25 DEC 2025 to 22 JAN 2026