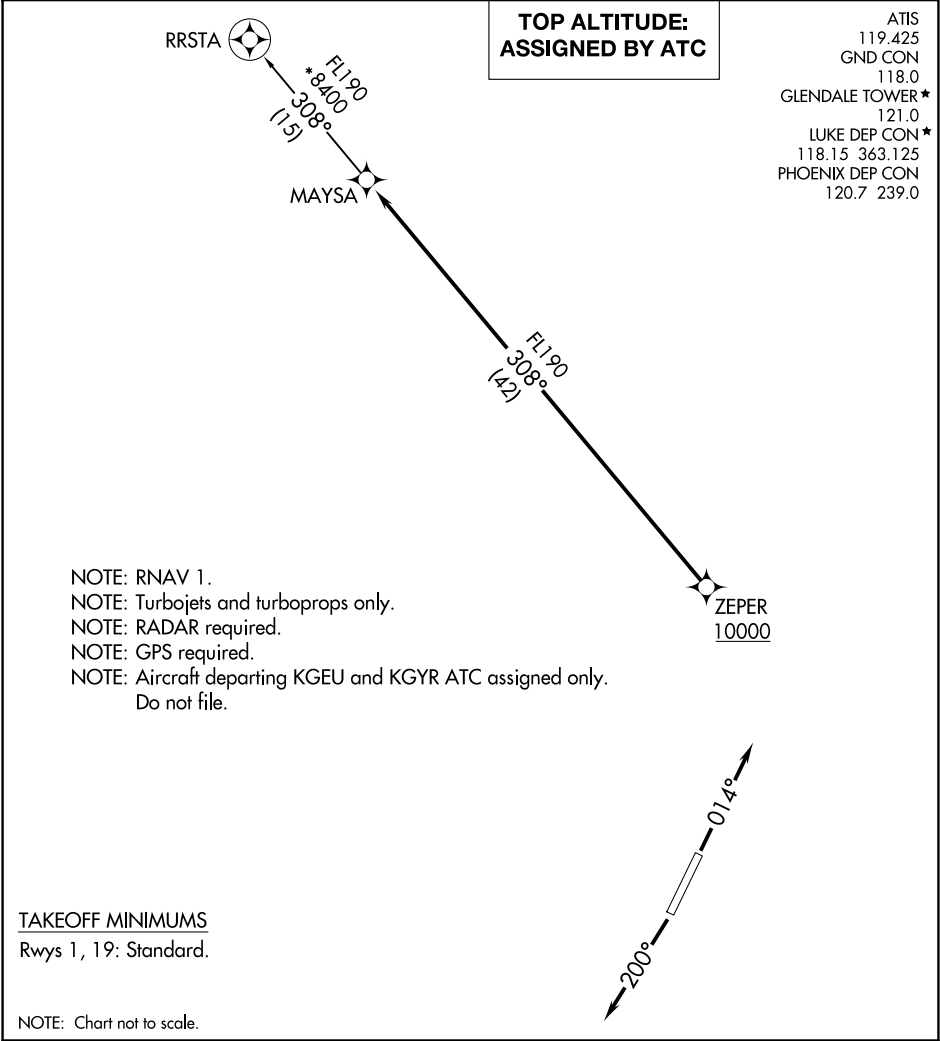


(MAYSA7.MAYSA) 24249

MAYSA SEVEN DEPARTURE (RNAV)

AL-6915 (FAA)

GLENDALÉ RGNL (GÉU)
GLENDALÉ, ARIZONA



▼

DEPARTURE ROUTE DESCRIPTION

TAKEOFF RUNWAY 1: Climb on heading 014° or as assigned by ATC, thence. . .

TAKEOFF RUNWAY 19: Climb on heading 200° or as assigned by ATC, thence. . .

. . . expect RADAR vectors to cross ZEPER at or above 10000, then on track 308° to MAYSA, then on RRSTA TRANSITION. Maintain ATC assigned altitude, expect filed altitude 3 minutes after departure.

RRSTA TRANSITION (MAYSA7.RRSTA)