

WAAS CH <b>42534</b> <b>W07A</b>	APP CRS <b>066°</b>	Rwy Ldg TDZE <b>1072</b> Apt Elev <b>1072</b>	<b>3632</b>
--	------------------------	---	-------------

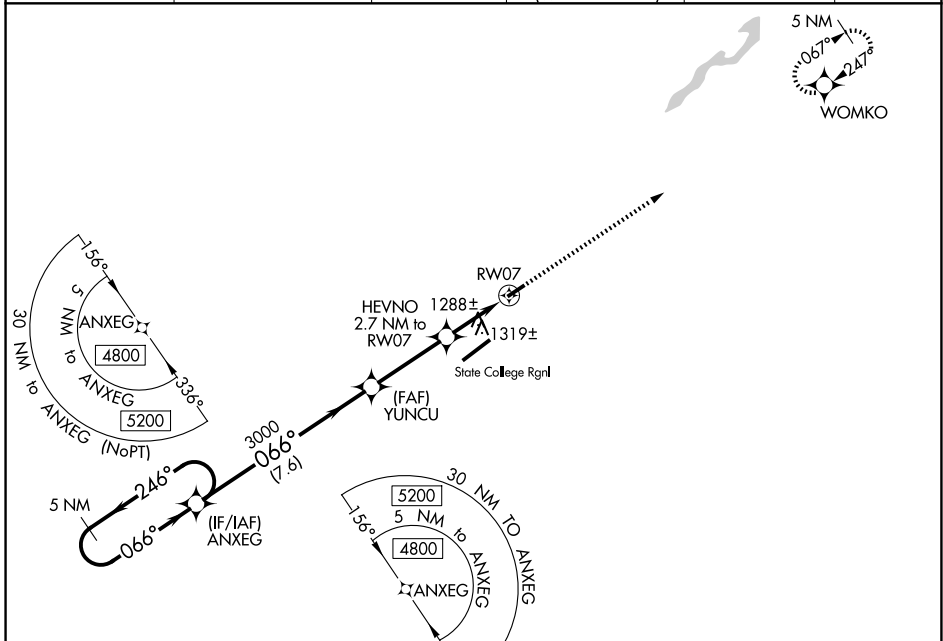
# RNAV (GPS) RWY 7

BELLEFONTE (N96)

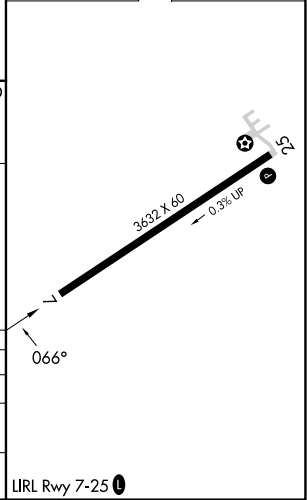
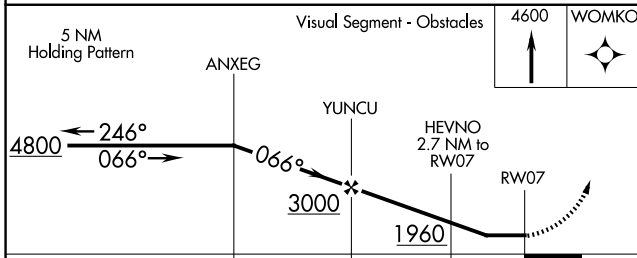
**NA** DME/DME RNP-0.3 NA. Use State College altimeter setting, when not received use Clearfield altimeter setting and increase all MDA 140 feet. Helicopter visibility reduction below 1 SM NA. Circling NA southeast of Rwy 7-25. Procedure NA at night.

**MISSED APPROACH:** Climb to 4600 direct WOMKO and hold, continue climb-in-hold to 4600.

UNV AWOS-3 <b>127.65</b>	NEW YORK CENTER <b>134.8 338.3</b>	CLNC DEL <b>125.725</b>	CLNC DEL <b>118.55</b> (When twr closed)	UNICOM <b>122.8</b> (CTAF)	<b>122.7</b> <b>0</b>
-----------------------------	---------------------------------------	----------------------------	--	-------------------------------	-----------------------



ELEV 1072	TDZE 1072
-----------	-----------



CATEGORY	A	B	C	D
LP MDA	1540-1	468 (500-1)		NA
LNAV MDA	1580-1	508 (600-1)		NA
CIRCLING	2140-1¼ 1068 (1100-1¼)	2380-1½ 1308 (1400-1½)		NA

NE-4, 25 DEC 2025 to 22 JAN 2026

NE-4, 25 DEC 2025 to 22 JAN 2026